

Product datasheet for PH326153

ECE1 (NM_001113349) Human Mass Spec Standard

Product data:

Product Type:	Mass Spec Standards
Description:	ECE1 MS Standard C13 and N15-labeled recombinant protein (NP_001106820)
Species:	Human
Expression Host:	HEK293
Expression cDNA Clone or AA Sequence:	RC226153
Predicted MW:	86.8 kDa
Protein Sequence:	>RC226153 representing NM_001113349 Red=Cloning site Green=Tags(s)

MEALRESVLHLALQMSTYKRATLDEEDLVDSLSEGDAYPNGLQVNFHSPRSGQRCWAARTQVEKRLVVLV
VLLAAGLVACLAALGIQYQTRSPSVCLSEACVSVTSSILSSMDPTVDPCHDFSYACGGWIKANVPDGH
SRWGTFNSLWEHNQAIKHLLENSTASVSEAERKAQVYYRACMNETRIEELRAKPLMELIERLGGWNITG
PWAKDNFQDTLQVVTAHYRTSPFFSVYVSADSKNSNSNVIQVDQSGGLPSRDYYLNKTENEKVL TGYN
YMQVQLGKLLGGGDEEAIRPQMQLDFETALANITIPQEKRRDEELIYHKVTAELQTLAPAINWLPFLN
TIFYPVEINESEPIVVYDKEYLEQISTLINTTDRCLLNMYIWNLVKRTSSFLDQRFQDADEKFMVEMYG
TKKTCLPRWKFVSDTENNLFALGPMFVKATFAEDSKSIATEIILEIKKAFEESSLTKWMDDEETRKS
KEKADAIYNMIGYPNFIMDPKELDKVFNDYTAVPDL YFENAMRFFNF SWRV TADQLRKAPNRDQWSMTPP
MVNAYYSPTKNEIVFPAGILQAPFYTRSSPKALNFGGIGVVVGHELTHAFDDQGREYDKDGNLRPWWKNS
SVEAFKRQTECMVEQYSNYSVNGEPVNGRHTLGENIADNGGLKAAAYRAYQNWVKKNGAEHSLPTLGLTNN
QLFFLGFAQVWC SVRTPESSHEGLITDPHSPSRFRVIGLSNSKEFSEHFRCPGSPMNPPhKCEVW

TRTRPLEQKLISEEDLAANDILDYKDDDDKV

Tag:	C-Myc/DDK
Purity:	> 80% as determined by SDS-PAGE and Coomassie blue staining
Concentration:	>0.05 µg/µL as determined by microplate BCA method
Labeling Method:	Labeled with [U- 13C6, 15N4]-L-Arginine and [U- 13C6, 15N2]-L-Lysine
Buffer:	25 mM Tris-HCl, 100 mM glycine, pH 7.3
Storage:	Store at -80°C. Avoid repeated freeze-thaw cycles.
Stability:	Stable for 3 months from receipt of products under proper storage and handling conditions.
RefSeq:	NP_001106820



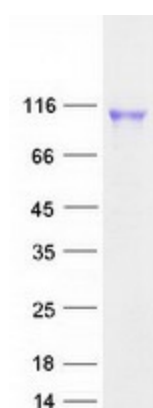
[View online »](#)

RefSeq ORF: 2301
Synonyms: ECE
Locus ID: 1889
UniProt ID: [P42892](#), [A0A024RAB2](#)
Cytogenetics: 1p36.12

Summary: The protein encoded by this gene is involved in proteolytic processing of endothelin precursors to biologically active peptides. Mutations in this gene are associated with Hirschsprung disease, cardiac defects and autonomic dysfunction. Alternatively spliced transcript variants encoding different isoforms have been noted for this gene.[provided by RefSeq, Sep 2009]

Protein Families: Druggable Genome, Protease, Transmembrane

Product images:



Coomassie blue staining of purified ECE1 protein (Cat# [TP326153]). The protein was produced from HEK293T cells transfected with ECE1 cDNA clone (Cat# [RC226153]) using MegaTran 2.0 (Cat# [TT210002]).