

## Product datasheet for PH326152

### SATB1 (NM\_001131010) Human Mass Spec Standard

#### Product data:

Product Type:	Mass Spec Standards
Description:	SATB1 MS Standard C13 and N15-labeled recombinant protein (NP_001124482)
Species:	Human
Expression Host:	HEK293
Expression cDNA Clone or AA Sequence:	RC226152
Predicted MW:	86 kDa
Protein Sequence:	>RC226152 protein sequence Red=Cloning site Green=Tags(s)

MDHLNEATQGKEHSEMSNNVSDPKGPPAKIARLEQNGSPLGRGRLGSTGAKMQGVPLKHSGLMKTNLRK  
GTMLPVFCVVEHYENAI EYDCKEEHAEFVLRKDMLFNQLIEMALLSLGYSHSSAAQAKGLIQVGKWNPV  
PLSYVTDAPDATVADMLQDVYHVVTLKIQLHSCPKELEDLPEQWSHTTVRNALKDLLKDMNQSSLAKECP  
LSQSMISSIVNSTYYANVSAAKCQEFGRWYKHFKKTKDMMVEMDSLSELSQGGANHVNFQGPVPGNTAE  
QPPSPAQLSHGSQPSVRTPLPNLHPGLVSTPISPQLVNQQLVMAQLLNQQYAVNRLLAQQSLNQQYLNHP  
PPVSRSMNKPLEQQVSTNTEVSSEIYQWVRDELKRAGISQAVFARVAFNRTOGLLSEILRKEEDPKTASQ  
SLLVNL RAMQNFLQLPEAERDRIYQDERERSLNAASAMGPAPL ISTPPSRPPQVK TATIATERNGKPENN  
TMNINASIYDEIQQEMKRAKVSQALFAKVAATKSQGWLCCELLRWKEDPSPENRTLWENLSMIRRFSLPQ  
PERDAIYEQESNAVHHGDRPPHI IHVPAEQIQQQQQQQQQQQQQAPPQPQQPQTGPRLPPRQPT  
VASPAESDEENRQKTRPRTKISVEALGILQSF IQDVGLYPDEEAIQTL SAQLDLPKYTI IKFFQNQRYYL  
KHHGKLDNSGLEVDVAEYKEEELLKDL EESVQDKNTNTLFSVKLEEELSVEGNTDINTDLKD

TRTRPLEQKLISEEDLAANDILDYKDDDDKV

Tag:	C-Myc/DDK
Purity:	> 80% as determined by SDS-PAGE and Coomassie blue staining
Concentration:	>0.05 µg/µL as determined by microplate BCA method
Labeling Method:	Labeled with [U- 13C6, 15N4]-L-Arginine and [U- 13C6, 15N2]-L-Lysine
Buffer:	25 mM Tris-HCl, 100 mM glycine, pH 7.3
Storage:	Store at -80°C. Avoid repeated freeze-thaw cycles.
Stability:	Stable for 3 months from receipt of products under proper storage and handling conditions.
RefSeq:	<a href="#">NP_001124482</a>



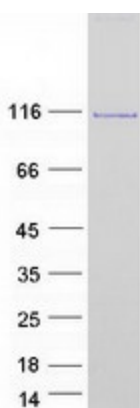
[View online »](#)

RefSeq Size: 4054  
RefSeq ORF: 2289  
Synonyms: DEFDA; KTZSL  
Locus ID: 6304  
UniProt ID: [Q01826](#), [A0A024R2H1](#)  
Cytogenetics: 3p24.3

**Summary:** This gene encodes a matrix protein which binds nuclear matrix and scaffold-associating DNAs through a unique nuclear architecture. The protein recruits chromatin-remodeling factors in order to regulate chromatin structure and gene expression. [provided by RefSeq, Apr 2016]

**Protein Families:** Druggable Genome, Transcription Factors

### Product images:



Coomassie blue staining of purified SATB1 protein (Cat# [TP326152]). The protein was produced from HEK293T cells transfected with SATB1 cDNA clone (Cat# [RC226152]) using MegaTran 2.0 (Cat# [TT210002]).