

Product datasheet for PH326083

WDR43 (NM_015131) Human Mass Spec Standard

Product data:

Product Type:	Mass Spec Standards
Description:	WDR43 MS Standard C13 and N15-labeled recombinant protein (NP_055946)
Species:	Human
Expression Host:	HEK293
Expression cDNA Clone or AA Sequence:	RC226083
Predicted MW:	74.7 kDa
Protein Sequence:	>RC226083 representing NM_015131 Red=Cloning site Green=Tags(s)

MAAGGGGSCDPLAPAGVPCAFSPHSQAYFALASTDGHLRVWETANNRLHQEYVPSAHLSTCTCLAWAPA
RLQAKESPQRKKRKSEAVGMSNQTDLLALGTAVGSILLYSTVKGELHSLKISGGHDNRVNCIQWHQDSGC
LYSCSDDKHIVEWVQTCVKCKWKGDNSVSSLCISPDGKMLLSAGRTIKLWVLETKEVYRHFTHGATP
VSSLMFTTIRPPNESQPFDGITGLYFLSGAVHDRLLNVWQVRSENKEKSAYMSFTVTDEPVYIDLTLSEN
KEEPVKLAVVCRDQVHLFEHILNGYCKKPLTSNCTIQIATPGKGGKSTPKPIPIILAAGFCSDKMSLLL
YGSWFQPTIERVALNSREPHMCLVRDISNCWAPKVETAITKVRTPVMNSEAKVLVPGIPGHAAIKPAPP
QTEQVESKRKSGGNEVSIERLGAMDIDTHKKGKEDLQTNFVLLTQGLESNDFEMLNKVLQTRNVNLI
KKTVLRMPLHTIIPLLQELTKRLQGHPSAVLMVQWLKCVLTVHASYLSTLPDLVPQLGTLYQLMESRVK
TFQKLSHLHGKILLITQVTASEKTKGATSPGQKAKLYEESSEESDDEIADKDESDNDEDEESES
EKDEDVEEEDAEKGDEENGEDRDTASEKELNGSDLDPENESEEE

TRTRPLEQKLISEEDLAANDILDYKDDDDKV

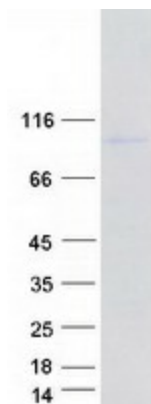
Tag:	C-Myc/DDK
Purity:	> 80% as determined by SDS-PAGE and Coomassie blue staining
Concentration:	>0.05 µg/µL as determined by microplate BCA method
Labeling Method:	Labeled with [U- 13C6, 15N4]-L-Arginine and [U- 13C6, 15N2]-L-Lysine
Buffer:	25 mM Tris-HCl, 100 mM glycine, pH 7.3
Storage:	Store at -80°C. Avoid repeated freeze-thaw cycles.
Stability:	Stable for 3 months from receipt of products under proper storage and handling conditions.
RefSeq:	NP_055946
RefSeq ORF:	2031



[View online »](#)

Synonyms:	NET12; UTP5
Locus ID:	23160
UniProt ID:	Q15061
Cytogenetics:	2p23.2
Summary:	Ribosome biogenesis factor. Involved in nucleolar processing of pre-18S ribosomal RNA. Required for optimal pre-ribosomal RNA transcription by RNA polymerase I.[UniProtKB/Swiss-Prot Function]

Product images:



Coomassie blue staining of purified WDR43 protein (Cat# [TP326083]). The protein was produced from HEK293T cells transfected with WDR43 cDNA clone (Cat# [RC226083]) using MegaTran 2.0 (Cat# [TT210002]).