

Product datasheet for PH326057

ARHGEF7 (NM_001113513) Human Mass Spec Standard

Product data:

Product Type:	Mass Spec Standards
Description:	ARHGEF7 MS Standard C13 and N15-labeled recombinant protein (NP_001106985)
Species:	Human
Expression Host:	HEK293
Expression cDNA Clone or AA Sequence:	RC226057
Predicted MW:	73 kDa
Protein Sequence:	>RC226057 representing NM_001113513 Red=Cloning site Green=Tags(s)

MTDNSNNQLVVRAKFNFQQTNEDELSFSKGDVIHVTRVEEGWEGTLNGRTGWFPSNYVREVKASEKPV
SPKSGTLKSPPKGFDTTAINKSYNVVLQNILETENEYSKELQTVLSTYLRPLQTSEKLSANISYLMGN
LEEICSFQQMLVQSLEECTKLPEAQQRVGGCFLNLMQMKTLTYCANHPSAVNVLTEHSEELGEFMET
KGASSPGILVLTGLSKPFMRDKYPTLLKELERHMEDYHTDRQDIQKSMAAFKNLSAQCQEVRRKKELE
LQILTEAIRNWEQDDIKTLGNVTYMSQVLQICAGSEEKNERYLLLFPNVLLMLSASPRMSGFIYQGKLP
TGMTITKLESENHRNAFEISGSMIERILVSCNNQDLQEWVHLQKQTKVTSVGNPTIKPHSVPSHTLP
SHPVTPSSKHADSKPAPLTPAYHTLPHPSHHGTPHTTINWGPLEPPKTPKPSLSCLRPAPPLRPSAALC
YKEDLSKSPKTMKLLPKRKPERKPSDEEFASRKSTAAL EEDAQILKVEAYCTSAKTRQTLNSSSRKES
APQVLLPEEEKIIVEETKSNQTVIEEKSLVDTVYALKDEVQELRQDNKMKKSLEEEQRARKDLEKLV
KVLKNMNDPAWDETNL

TRTRPLEQKLI SEEDLAANDILDYKDDDDKV

Tag:	C-Myc/DDK
Purity:	> 80% as determined by SDS-PAGE and Coomassie blue staining
Concentration:	>0.05 µg/µL as determined by microplate BCA method
Labeling Method:	Labeled with [U- 13C6, 15N4]-L-Arginine and [U- 13C6, 15N2]-L-Lysine
Buffer:	25 mM Tris-HCl, 100 mM glycine, pH 7.3
Storage:	Store at -80°C. Avoid repeated freeze-thaw cycles.
Stability:	Stable for 3 months from receipt of products under proper storage and handling conditions.
RefSeq:	NP_001106985
RefSeq ORF:	1938



[View online »](#)

Synonyms: BETA-PIX; COOL-1; COOL1; Nbla10314; P50; P50BP; P85; P85COOL1; P85SPR; PAK3; PIXB

Locus ID: 8874

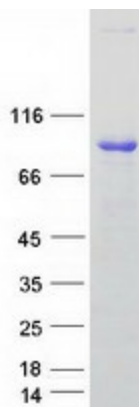
UniProt ID: [Q14155](#), [A0A024RDY9](#)

Cytogenetics: 13q34

Summary: This gene encodes a protein that belongs to a family of cytoplasmic proteins that activate the Ras-like family of Rho proteins by exchanging bound GDP for GTP. It forms a complex with the small GTP binding protein Rac1 and recruits Rac1 to membrane ruffles and to focal adhesions. Multiple alternatively spliced transcript variants encoding different isoforms have been observed for this gene. [provided by RefSeq, Mar 2016]

Protein Pathways: Regulation of actin cytoskeleton

Product images:



Coomassie blue staining of purified ARHGEF7 protein (Cat# [TP326057]). The protein was produced from HEK293T cells transfected with ARHGEF7 cDNA clone (Cat# [RC226057]) using MegaTran 2.0 (Cat# [TT210002]).