

Product datasheet for PH326056

ABLIM2 (NM_001130083) Human Mass Spec Standard

Product data:

Product Type:	Mass Spec Standards
Description:	ABLIM2 MS Standard C13 and N15-labeled recombinant protein (NP_001123555)
Species:	Human
Expression Host:	HEK293
Expression cDNA Clone or AA Sequence:	RC226056
Predicted MW:	71.4 kDa
Protein Sequence:	>RC226056 representing NM_001130083 Red=Cloning site Green=Tags(s)

MSAVSQQAAPSPLEKSPSTAILCNTCGNVCKGEVLRVQDKYFHIKCFVCKACGCDLAEGGFFVRQGEYI
CTLDYQRLYGTRCFSCDQFIEGEVVSALGKTYHPDCFVCAVCRLPFPPGDRVTFNGKECMCQKCSLPVSV
GSSAHLSQLRSCGGCGTEIKNGQALVALDKHWHLGCFKCKSCGKLLNAEYISKDGLPYCEADYHAKFGI
RCDSCKEYITGRVLEAGEKHYHPSCALCVRGQMFAGEEEMYLQSSIWHPACRQAARTEDRNKETRTSS
ESIISVPASSTSGSPSRVIYAKLGGEILDYRDLAALPKSKAIYDIDRPDMI SYSPYISHSAGDRQSYGEG
DQDDRSYKQCRTPSSSTGSVSLGRYTPTSRSPQHYSRPAGTVSVGTSSCLSLSQHPSPTSVFRHHYIPY
FRGSESGRSTPSLSVLSKPPSTYQQAPRHFHVPDTPGVKDNIYRKPPIYRQHAARRSDGEDGSLDQDN
RKQKSSWMLKGDADTRTNSPDLTQSLSHSSGTDRLDPLQRMAGDSFHSRFPYSKSDPLPGHGKNGLDQR
NANLAPCGADPDASWGMREYKIYPYDSLIVTNIRVKLPKDVDRTRLERHLSPEEFQEVFGMSIEEFDRL
ALWKRNDLKKKALLF

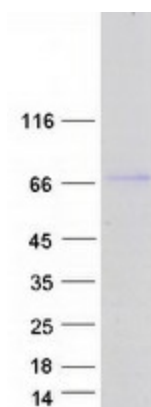
TRTRPLEQKLI SEEDLAANDILDYKDDDDKV

Tag:	C-Myc/DDK
Purity:	> 80% as determined by SDS-PAGE and Coomassie blue staining
Concentration:	>0.05 µg/µL as determined by microplate BCA method
Labeling Method:	Labeled with [U- 13C6, 15N4]-L-Arginine and [U- 13C6, 15N2]-L-Lysine
Buffer:	25 mM Tris-HCl, 100 mM glycine, pH 7.3
Storage:	Store at -80°C. Avoid repeated freeze-thaw cycles.
Stability:	Stable for 3 months from receipt of products under proper storage and handling conditions.
RefSeq:	NP_001123555
RefSeq ORF:	1935



[View online »](#)

Locus ID:	84448
UniProt ID:	Q6H8Q1 , A0A140VK02
Cytogenetics:	4p16.1
Summary:	May act as scaffold protein. May stimulate ABRA activity and ABRA-dependent SRF transcriptional activity.[UniProtKB/Swiss-Prot Function]
Protein Pathways:	Axon guidance

Product images:

Coomassie blue staining of purified ABLIM2 protein (Cat# [TP326056]). The protein was produced from HEK293T cells transfected with ABLIM2 cDNA clone (Cat# [RC226056]) using MegaTran 2.0 (Cat# [TT210002]).