

Product datasheet for PH326035

KLC2 (NM_001134776) Human Mass Spec Standard

Product data:

Product Type:	Mass Spec Standards
Description:	KLC2 MS Standard C13 and N15-labeled recombinant protein (NP_001128248)
Species:	Human
Expression Host:	HEK293
Expression cDNA Clone or AA Sequence:	RC226035
Predicted MW:	68.9 kDa
Protein Sequence:	>RC226035 protein sequence Red=Cloning site Green=Tags(s)

MAMMVFPREEKLSQDEIVLGTKAVIQGLETLRGEHRALLAPLVAPEAGEAEPGSQERCILLRRSLEAIEL
GLGEAQVILALSSHLGAVESEKQKLRAQVRRRLVQENQWLREELAGTQQKLQRSEQAVAQLEEEKQHLLFM
SQIRKLDDEDASPNEEKGDVPKDTLDDLFPNEDEQSPAPSPGGDVSQHGQYIEIPARLRTLHNLVIQYAS
QGRIYEVAVPLCKQALEDEKTSQGHDPDVATMLNILALVYRDQNKYKEAAHLLNDALAIREKTLGKDHPA
VAATLNNLAVLYGKRGKYKEAEPLCKRALEIREKVLGKFHPDVAQQLSNLALLCQNGKAEVEYYRRA
LEIYATRLGPDDPNVAKTKNNLASCYLKQGYQDAETLYKEILTRAHEKEFGSVNGDNKPIWMHAEREE
SKDKRRDSAPYGEYGSWYKACKVDSPTVNTTLRSLGALYRRQKLEAAHTLEDCASTRNRKQGLDPASQTK
VVELLKDGSGRRGDRSSRDMAGGAGPRSESDLEDVGPTAEWNGDGGSLRRSGSFGKLRDALRRSSEML
VKKLQGGTPQEPNPRMKRASSLNFLNKSVEEPTQPGGTGLSDSRTLSSSSMDLSRRSSLVG

TRTRPLEQKLI SEEDLAANDILDYKDDDDKV

Tag:	C-Myc/DDK
Purity:	> 80% as determined by SDS-PAGE and Coomassie blue staining
Concentration:	>0.05 µg/µL as determined by microplate BCA method
Labeling Method:	Labeled with [U- 13C6, 15N4]-L-Arginine and [U- 13C6, 15N2]-L-Lysine
Buffer:	25 mM Tris-HCl, 100 mM glycine, pH 7.3
Storage:	Store at -80°C. Avoid repeated freeze-thaw cycles.
Stability:	Stable for 3 months from receipt of products under proper storage and handling conditions.
RefSeq:	NP_001128248
RefSeq Size:	2972
RefSeq ORF:	1866



[View online »](#)

Locus ID: 64837

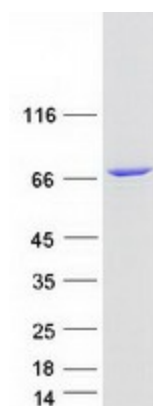
UniProt ID: [Q9H0B6](#)

Cytogenetics: 11q13.2

Summary: The protein encoded by this gene is a light chain of kinesin, a molecular motor responsible for moving vesicles and organelles along microtubules. Defects in this gene are a cause of spastic paraplegia, optic atrophy, and neuropathy (SPOAN) syndrome. [provided by RefSeq, Mar 2016]

Protein Families: Druggable Genome

Product images:



Coomassie blue staining of purified KLC2 protein (Cat# [TP326035]). The protein was produced from HEK293T cells transfected with KLC2 cDNA clone (Cat# [RC226035]) using MegaTran 2.0 (Cat# [TT210002]).