

## Product datasheet for PH325882

### SMTNL1 (NM\_001105565) Human Mass Spec Standard

#### Product data:

Product Type:	Mass Spec Standards
Description:	SMTNL1 MS Standard C13 and N15-labeled recombinant protein (NP_001099035)
Species:	Human
Expression Host:	HEK293
Expression cDNA Clone or AA Sequence:	RC225882
Predicted MW:	52.99 kDa
Protein Sequence:	>RC225882 representing NM_001105565 Red=Cloning site Green=Tags(s)

MEQKEGKLSGDGTTVSPAADNPMSGGGAPAEETKGTAGKAINEGPPTESGKQEKAPAEDGMSAELQGEA  
NGLDEVKVESQREAGGKEDAEALKKEDGEKEETT VGSQEMTGRKEETKSEPKEAEEKESTLASEKQKAE  
EKEAKPESGQKADANDRKPEPKATVEEEDAKTASQEETGQRKECSTEPKEKATDEEAKAESQKAVVEDE  
AKAEPKEPDGKEEAKHGAKEEADAKEEAEDAEAEAPGSPSEEQEQDVEKEPEGGAGVIPSSPEEWESPT  
GEGHNLSTDGLGPDCVASGQTSASESSPSDVPQSPPESSSGEKKKAPERRVSAPARPRGPRAQNRK  
AIVDKFGGAASGPTALFRNTKAAGAAIGGVKNMLLEWCRAMTKKYEHVDIQNFSSSWSSGMALCALIHKF  
FPDAFDYAEALDPAKRRHNF LAFSTA EKLADCAQLLDVDDMVRLAVPDSKCVYTYIQEL YRSLVQKGLVK  
TKKK

TRTRPLEQKLI SEEDLAANDILDYKDDDDKV

Tag:	C-Myc/DDK
Purity:	> 80% as determined by SDS-PAGE and Coomassie blue staining
Concentration:	>0.05 µg/µL as determined by microplate BCA method
Labeling Method:	Labeled with [U- 13C6, 15N4]-L-Arginine and [U- 13C6, 15N2]-L-Lysine
Buffer:	25 mM Tris-HCl, 100 mM glycine, pH 7.3
Storage:	Store at -80°C. Avoid repeated freeze-thaw cycles.
Stability:	Stable for 3 months from receipt of products under proper storage and handling conditions.
RefSeq:	<a href="#">NP_001099035</a>
RefSeq ORF:	1482
Synonyms:	CHASM



[View online »](#)

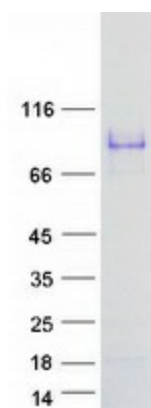
Locus ID: 219537

UniProt ID: [A8MU46](#)

Cytogenetics: 11q12.1

**Summary:** The protein encoded by this gene is involved in the contraction of both striated and smooth muscle. During pregnancy, the encoded protein interacts with progesterone receptor to attenuate the expression of contractile and metabolic proteins. [provided by RefSeq, Jul 2016]

### Product images:



Coomassie blue staining of purified SMTNL1 protein (Cat# [TP325882]). The protein was produced from HEK293T cells transfected with SMTNL1 cDNA clone (Cat# [RC225882]) using MegaTran 2.0 (Cat# [TT210002]).