

## Product datasheet for PH325870

### RIPX (RUFY3) (NM\_001130709) Human Mass Spec Standard

#### Product data:

Product Type:	Mass Spec Standards
Description:	RUFY3 MS Standard C13 and N15-labeled recombinant protein (NP_001124181)
Species:	Human
Expression Host:	HEK293
Expression cDNA Clone or AA Sequence:	RC225870
Predicted MW:	55.7 kDa
Protein Sequence:	>RC225870 representing NM_001130709 Red=Cloning site Green=Tags(s)

MAETPPPTAGAESCEEPARGGEWRPEEPRRAPAGGTDREGEAGPPASPAGQSEPSPVAAPFFLLYP  
GDGGAGFGVRPPPPQQRSWRTPPPSPGSPLPFLLLSYPSGGGGSSGSKHHPNYLMANERMNLMNMAKLSI  
KGLIESALNLGRTLDSYAPLQQFFVMEHCLKHGLKAKKTFLLGQNKSFWGPLELVEKLVPEAAEITASV  
KDLPLGKTPVGRGRAWLRALMQKKLSEYMKALINKKELLSEFYEPNALMMEEEGAIAGLLVGLNVIDA  
NFCMKGEDLDSQVGVDFSMYKLDGNSSKGTEDGQITAILDQKNYVEELNRHLNATVNNLQAKVDALEK  
SNTKLTEELAVANNRIITLQEEMERVKEESSYILESNRKGPKQDRTAEGQALSEARKHLKEETQLRLDVE  
KELEMQISMRQEMELAMKMLEKDVCEKQDALVSLRQQLDDLRAKHELAFKQLQSSDLGVKQKSELNSRLE  
EKTNQMAATIKQLEQR

TRTRPLEQKLISEEDLAANDILDYKDDDDKV

Tag:	C-Myc/DDK
Purity:	> 80% as determined by SDS-PAGE and Coomassie blue staining
Concentration:	>0.05 µg/µL as determined by microplate BCA method
Labeling Method:	Labeled with [U- 13C6, 15N4]-L-Arginine and [U- 13C6, 15N2]-L-Lysine
Buffer:	25 mM Tris-HCl, 100 mM glycine, pH 7.3
Storage:	Store at -80°C. Avoid repeated freeze-thaw cycles.
Stability:	Stable for 3 months from receipt of products under proper storage and handling conditions.
RefSeq:	<a href="#">NP_001124181</a>
RefSeq ORF:	1518
Synonyms:	RIPX; SINGAR1; ZFYVE30



[View online »](#)

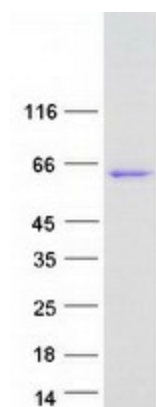
Locus ID: 22902

UniProt ID: [Q7L099](#)

Cytogenetics: 4q13.3

**Summary:** This gene encodes a RPIP8, UNC-14, and NESCA domain-containing protein that is required for maintenance of neuronal polarity. In addition, it has been implicated in mediation of gastric cancer cell migration and invasion via interaction with P21-activated kinase-1, which promotes its expression. The encoded protein localizes to F-actin-enriched invadopodia to induce formation of protrusions, thereby facilitating cell migration. Alternative splicing results in multiple transcript variants. [provided by RefSeq, Sep 2016]

### Product images:



Coomassie blue staining of purified RUFY3 protein (Cat# [TP325870]). The protein was produced from HEK293T cells transfected with RUFY3 cDNA clone (Cat# [RC225870]) using MegaTran 2.0 (Cat# [TT210002]).