

Product datasheet for PH325856

WDR26 (NM_001115113) Human Mass Spec Standard

Product data:

Product Type:	Mass Spec Standards
Description:	WDR26 MS Standard C13 and N15-labeled recombinant protein (NP_001108585)
Species:	Human
Expression Host:	HEK293
Expression cDNA Clone or AA Sequence:	RC225856
Predicted MW:	56.94 kDa
Protein Sequence:	>RC225856 representing NM_001115113 Red =Cloning site Green =Tags(s)

MQESGCRLEHPSATKFRNHVMEGDWDKAENDLNELKPLVHSPHAIVRMKFLLLQQKYLEYLEDGKVL EAL
 QVLRCELTPLKYNTERIHVLSGYLMCSHAEDLRAKAEWEGKGTASRSKLLDKLQTYLPPSVMLPPRRLQT
 LLRQAVELQRDRCLYHNTKLDNNLDSVSLIDHVCRRQFPCYTQQILTEHCNEVWFCFSDNGTKLATG
 SKDTTVIIWQVDPDTHLLKLLKTLEGHAYGVSYIAWSPDDNYLVACGPDDCSELWLVNVTGELRTKMSQ
 SHEDSLTSVAWNPDGKRFVTGGQRGQFYQCDLGNLLDSWEGVRVQCLWCLSDGKTVLASDTHQIRIGYN
 FEDLTDRNIVQEDHPIMSFTISKNGRLALLNVATQGVHLWDLQDRVLVRKYQGVQTGFYTIHSCFGGHNE
 DFIASGSEDHKYYIWHKRSELP I AELTGHTRTVNCVSWNPQIPSMASASDDGTVRIWGPAPFIDHQNIE
 EECSSMDS

TRTRPLEQKLISEEDLANDILDYKDDDDKV

Tag:	C-Myc/DDK
Purity:	> 80% as determined by SDS-PAGE and Coomassie blue staining
Concentration:	>0.05 µg/µL as determined by microplate BCA method
Labeling Method:	Labeled with [U- ¹³ C ₆ , ¹⁵ N ₄]-L-Arginine and [U- ¹³ C ₆ , ¹⁵ N ₂]-L-Lysine
Buffer:	25 mM Tris-HCl, 100 mM glycine, pH 7.3
Storage:	Store at -80°C. Avoid repeated freeze-thaw cycles.
Stability:	Stable for 3 months from receipt of products under proper storage and handling conditions.
RefSeq:	<u>NP_001108585</u>
RefSeq ORF:	1494
Synonyms:	CDW2; GID7; MIP2; SKDEAS


[View online »](#)

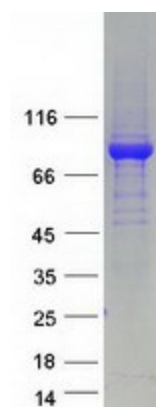
Locus ID: 80232

UniProt ID: [Q9H7D7](#)

Cytogenetics: 1q42.11-q42.12

Summary: This gene encodes a member of the WD repeat protein family. WD repeats are minimally conserved regions of approximately 40 amino acids typically bracketed by gly-his and trp-aspartate (GH-WD), which may facilitate formation of heterotrimeric or multiprotein complexes. Members of this family are involved in a variety of cellular processes, including cell cycle progression, signal transduction, apoptosis, and gene regulation. Two transcript variants encoding two different isoforms have been found for this gene. [provided by RefSeq, Jul 2008]

Product images:



Coomassie blue staining of purified WDR26 protein (Cat# [TP325856]). The protein was produced from HEK293T cells transfected with WDR26 cDNA clone (Cat# [RC225856]) using MegaTran 2.0 (Cat# [TT210002]).