

## Product datasheet for PH325852

### ATF7 (NM\_001130059) Human Mass Spec Standard

#### Product data:

Product Type:	Mass Spec Standards
Description:	ATF7 MS Standard C13 and N15-labeled recombinant protein (NP_001123531)
Species:	Human
Expression Host:	HEK293
Expression cDNA Clone or AA Sequence:	RC225852
Predicted MW:	52.8 kDa
Protein Sequence:	>RC225852 representing NM_001130059 Red=Cloning site Green=Tags(s)

MGDDRPFVCNAPGCGQRFNEDHLAVHKHKHEMTLKFGPARTDSVIIADQTPTPTRLKNC EEVGLFNEL  
ASSFEHEFKAADEDEKKARSRTVAKKL VAAAGPLDMSLPSTPDIKIKEE EPVEVDSSPPD SPASSPCSP  
PLKEKEVTPKPVLISTPTPTIVRPGSLPLHLGYDPLHPTLPSP TSVITQAPPSNRQMGSP TGS LPLVMHL  
ANGQTMPVLP GPPVQMP SVISLARPVSMVNP IGP GPPVNSSGSI SP SGHP I PSEAKMRLKATL THQVS  
SINGGCGMVVGTASTMVTARPEQS QILIQHPDAPSPAQPQVSPAQPTPSTGGRRRR T VDEDPDERRQRF L  
ERNRAAASRCRQKRKLWVSSLEKKA EELTSQNIQLSNEVTLLRNEVAQLKQLLLAHKDCPV TALQKKTQG  
YLESPKESSEPTGSPAPVIQHSSATAPSNGLSVRSAAEAVATSVLTQMASQRTELSMPIQSHVIMTPQSQ  
SAGR

TRTRPLEQKLI SEEDLAANDILDYKDDDDKV

Tag:	C-Myc/DDK
Purity:	> 80% as determined by SDS-PAGE and Coomassie blue staining
Concentration:	>0.05 µg/µL as determined by microplate BCA method
Labeling Method:	Labeled with [U- 13C6, 15N4]-L-Arginine and [U- 13C6, 15N2]-L-Lysine
Buffer:	25 mM Tris-HCl, 100 mM glycine, pH 7.3
Storage:	Store at -80°C. Avoid repeated freeze-thaw cycles.
Stability:	Stable for 3 months from receipt of products under proper storage and handling conditions.
RefSeq:	<u>NP_001123531</u>
RefSeq ORF:	1482
Synonyms:	ATFA



[View online »](#)

Locus ID: 11016

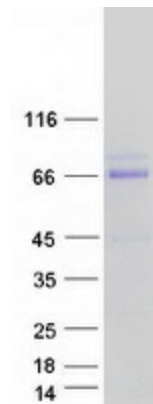
UniProt ID: [P17544](#)

Cytogenetics: 12q13.13

**Summary:** Plays important functions in early cell signaling. Binds the cAMP response element (CRE) (consensus: 5'-GTGACGT[AG][AG]-3'), a sequence present in many viral and cellular promoters. Activator of the NF-ELAM1/delta-A site of the E-selectin promoter. Has no intrinsic transcriptional activity, but activates transcription on formation of JUN or FOS heterodimers. Also can bind TRE promoter sequences when heterodimerized with members of the JUN family.[UniProtKB/Swiss-Prot Function]

**Protein Families:** Transcription Factors

### Product images:



Coomassie blue staining of purified ATF7 protein (Cat# [TP325852]). The protein was produced from HEK293T cells transfected with ATF7 cDNA clone (Cat# [RC225852]) using MegaTran 2.0 (Cat# [TT210002]).