

Product datasheet for PH325842

LYN (NM_001111097) Human Mass Spec Standard

Product data:

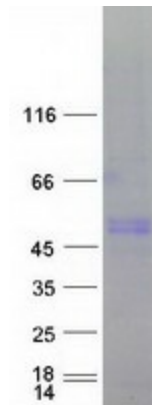
Product Type:	Mass Spec Standards
Description:	LYN MS Standard C13 and N15-labeled recombinant protein (NP_001104567)
Species:	Human
Expression Host:	HEK293
Expression cDNA Clone or AA Sequence:	RC225842
Predicted MW:	55.9 kDa
Protein Sequence:	>RC225842 representing NM_001111097 Red =Cloning site Green =Tags(s) MGCIKSKGKDSLSDDGVDLKTQPVPESQLLPGQRFQTKDPPEEQGDIVVALYPYDGIHPDDL SFKKGEKMK VLEEHGEWWKAKSLLTKKEGFIPSNYVAKLNTLETEWFFKDI TRKDAERQLLAPGNSAGAF LIRESETL KGSFSLSVRDFDPVHGDVIKHYKIRSLDNGGYISPRITFPCISDMIKHYQKQADGLCRRLEKACISPKP QKPWDKDAWEIPRESIKLVKRLGAGQFGEVWVMGYNNSTKVAVKTLKPGTMSVQAFLEEANLMKTLQHDK LVRLYAVVTREPIYIIITEYMAKGSLLDFLKSDEGGKVLPLKIDFSAQIAEGMAYIERKNYIHRDLRAA NVLVSESLMCKIADFGARVIEDNEYTAREGAKFPKWTAPEA INFGCFTIKSDVWSFGILLYEIVTYGK IPYPGRTNADVMTALSQGYRMPRVENCPELDYIMKMCWKEAEERPTFDYLQSVLDDFYTATEGQYQQQ P TRTRPLEQKLI SEEDLAANDILDYKDDDDKV
Tag:	C-Myc/DDK
Purity:	> 80% as determined by SDS-PAGE and Coomassie blue staining
Concentration:	>0.05 µg/µL as determined by microplate BCA method
Labeling Method:	Labeled with [U- ¹³ C ₆ , ¹⁵ N ₄]-L-Arginine and [U- ¹³ C ₆ , ¹⁵ N ₂]-L-Lysine
Buffer:	25 mM Tris-HCl, 100 mM glycine, pH 7.3
Storage:	Store at -80°C. Avoid repeated freeze-thaw cycles.
Stability:	Stable for 3 months from receipt of products under proper storage and handling conditions.
RefSeq:	NP_001104567
RefSeq ORF:	1473
Synonyms:	JTK8; p53Lyn; p56Lyn



[View online »](#)

Locus ID:	4067
UniProt ID:	P07948 , Q6NUK7 , P07948-2
Cytogenetics:	8q12.1
Summary:	This gene encodes a tyrosine protein kinase, which maybe involved in the regulation of mast cell degranulation, and erythroid differentiation. Alternatively spliced transcript variants encoding different isoforms have been found for this gene. [provided by RefSeq, Jul 2011]
Protein Families:	Druggable Genome, Protein Kinase
Protein Pathways:	B cell receptor signaling pathway, Chemokine signaling pathway, Epithelial cell signaling in Helicobacter pylori infection, Fc epsilon RI signaling pathway, Fc gamma R-mediated phagocytosis, Long-term depression

Product images:



Coomassie blue staining of purified LYN protein (Cat# [TP325842]). The protein was produced from HEK293T cells transfected with LYN cDNA clone (Cat# [RC225842]) using MegaTran 2.0 (Cat# [TT210002]).