

Product datasheet for PH325806

CAP1 (NM_001105530) Human Mass Spec Standard

Product data:

Product Type:	Mass Spec Standards
Description:	CAP1 MS Standard C13 and N15-labeled recombinant protein (NP_001099000)
Species:	Human
Expression Host:	HEK293
Expression cDNA Clone or AA Sequence:	RC225806
Predicted MW:	51.7 kDa
Protein Sequence:	>RC225806 protein sequence Red=Cloning site Green=Tags(s)

MADMQNLVERLERAVGRLEAVSHTSDMHRGYADSPSKAGAAPYVQAFDSL LAGPVAEY LKISKEIGGDVQ
KHAEMVHTGLKLERALLVTASQCQQPAENKLSDLLAPISEIQIKEVITFREKNRGSKLFNHL SAVSESIQA
LGWVAMAPKPGPYVKEMNDAAMFYTNRVLKEYKDVKKHVDWVKAYLSIWTELQAYIKEFHHTGLAWSKT
GPVAKEL SGLPSGPSAGSGPPPPPPPPPPVSTSSGSDESASRSALFAQINQGESITHALKHVSDDMKT
HKNPALKAQSGPVRSGPKPFSAPKPQTSPSPKRATKKEPAVLELEGKKWRVENQENVSNLVIEDTELKQV
AYIYKCVNTTLQIKGKINSITVDNCKKLG L VFDDVVGIVEI INSKDVKVQVMGKVPTISINKTDGCHAYL
SKNSLDCEIVSAKSSEMNVLIPTGGDFNEFPVPEQFKTLWNGQKLVTTVTEIAG

TRTRPLEQKLI SEEDLAANDILDYKDDDDKV

Tag:	C-Myc/DDK
Purity:	> 80% as determined by SDS-PAGE and Coomassie blue staining
Concentration:	>0.05 µg/µL as determined by microplate BCA method
Labeling Method:	Labeled with [U- ¹³ C ₆ , ¹⁵ N ₄]-L-Arginine and [U- ¹³ C ₆ , ¹⁵ N ₂]-L-Lysine
Buffer:	25 mM Tris-HCl, 100 mM glycine, pH 7.3
Storage:	Store at -80°C. Avoid repeated freeze-thaw cycles.
Stability:	Stable for 3 months from receipt of products under proper storage and handling conditions.
RefSeq:	<u>NP_001099000</u>
RefSeq Size:	2780
RefSeq ORF:	1425
Synonyms:	CAP; CAP1-PEN



[View online »](#)

Locus ID: 10487

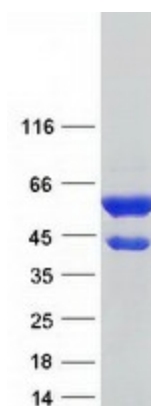
UniProt ID: [Q01518](#), [D3DPU2](#)

Cytogenetics: 1p34.2

Summary: The protein encoded by this gene is related to the *S. cerevisiae* CAP protein, which is involved in the cyclic AMP pathway. The human protein is able to interact with other molecules of the same protein, as well as with CAP2 and actin. Alternatively spliced transcript variants encoding different isoforms have been identified. [provided by RefSeq, Aug 2016]

Protein Families: Druggable Genome

Product images:



Coomassie blue staining of purified CAP1 protein (Cat# [TP325806]). The protein was produced from HEK293T cells transfected with CAP1 cDNA clone (Cat# [RC225806]) using MegaTran 2.0 (Cat# [TT210002]).