

## Product datasheet for PH325796

### ABLIM2 (NM\_001130088) Human Mass Spec Standard

#### Product data:

Product Type:	Mass Spec Standards
Description:	ABLIM2 MS Standard C13 and N15-labeled recombinant protein (NP_001123560)
Species:	Human
Expression Host:	HEK293
Expression cDNA Clone or AA Sequence:	RC225796
Predicted MW:	51.5 kDa
Protein Sequence:	>RC225796 representing NM_001130088 Red=Cloning site Green=Tags(s)

MSAVSQPQAAPSPLEKSPSTAILCNTCGNVCKGEVLRVQDKYFHFKCFVCKACGCDLAEGGFFVRQGEYI  
CTLDYQRLYGTRCFSCDQFIEGEVVSALGKTYHPDCFVCAVCRLFPFPGDRVTFNGKECMQCKCSLPVSV  
GSSAHLSQLRSCGCGTEIKNGQALVALDKHWHLGCFKCKSCGKLLNAEYISKDGLPYCEADYHAKFGI  
RCDSCKEYITGRVLEAGEKHYHPSCALCVRGQMFAGEEEMYLQGSSIWHPACRQAARTEDRNKETRSTSS  
ESIISVPASSTSGSPSRVIYAKLGGEILDYRDLAALPKSKAIYDIDRPDMI SYSPYISHSAGDRQSYGES  
PQLLSPTPTEGDQDRSYKQCRTSSPSTGVSLSLGRYTPTSRSPQHYSRPAARRSDGEDGSLDQDNRKQK  
SSWMLMKGADTRTNSPDLDTQSLSHSSGTDTRDPLQRMAGDSFHSREWFF

TRTRPLEQKLI SEEDLAANDILDYKDDDDKV

Tag:	C-Myc/DDK
Purity:	> 80% as determined by SDS-PAGE and Coomassie blue staining
Concentration:	>0.05 µg/µL as determined by microplate BCA method
Labeling Method:	Labeled with [U- <sup>13</sup> C <sub>6</sub> , <sup>15</sup> N <sub>4</sub> ]-L-Arginine and [U- <sup>13</sup> C <sub>6</sub> , <sup>15</sup> N <sub>2</sub> ]-L-Lysine
Buffer:	25 mM Tris-HCl, 100 mM glycine, pH 7.3
Storage:	Store at -80°C. Avoid repeated freeze-thaw cycles.
Stability:	Stable for 3 months from receipt of products under proper storage and handling conditions.
RefSeq:	<u>NP_001123560</u>
RefSeq ORF:	1410
Locus ID:	84448
UniProt ID:	<u>Q6H8Q1</u>



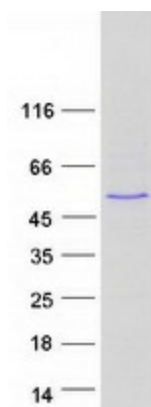
[View online »](#)

Cytogenetics: 4p16.1

Summary: May act as scaffold protein. May stimulate ABRA activity and ABRA-dependent SRF transcriptional activity.[UniProtKB/Swiss-Prot Function]

Protein Pathways: Axon guidance

### Product images:



Coomassie blue staining of purified ABLIM2 protein (Cat# [TP325796]). The protein was produced from HEK293T cells transfected with ABLIM2 cDNA clone (Cat# [RC225796]) using MegaTran 2.0 (Cat# [TT210002]).