

Product datasheet for PH325714

Estrogen Related Receptor gamma (ESRRG) (NM_001134285) Human Mass Spec Standard

Product data:

Product Type:	Mass Spec Standards
Description:	ESRRG MS Standard C13 and N15-labeled recombinant protein (NP_001127757)
Species:	Human
Expression Host:	HEK293
Expression cDNA Clone or AA Sequence:	RC225714
Predicted MW:	48.6 kDa
Protein Sequence:	>RC225714 protein sequence Red=Cloning site Green=Tags(s)
	MSNKDRHIDSSCSF IKTEPSSPASLTDSVNHSPGGSSDASGSYSSTMNGHQ NGLDSPPLYPSAPILGG SGPVRKLYDDCSSTIVEDPQTKCEYMLNSMPKRLCLVCGD IASGYHYGVASCEACKAFFKRTIQGNIEYS CPATNECEITKRRRKSCQACRFMKCLKVGM LKEGVRLDRVRGGRQKYKRRIDAENSPYLNPLVQPAKPP YNKIVSHLLVAEPEKIYAMPDPTVPDS DIKAL TTLCDLADREL VVIIGWAKHIPGFSTLSLADQMSLLQS AWMEILILGVVYRSL SFEDELVYADDYIMDEDQSKLAGLLDLNNA I LQLVKKYKSMKLEKEEFVTLKAIA LANSDSMHIEDVEAVQKLQDVLHEALQDYEAGQH MEDPRRAGKMLMTLPLLRQTSTKAVQHFYNIKLE GK VPMHKL FLEMLEAKV
	TRTRPLEQKLI SEEDLAANDILDYKDDDDKV
Tag:	C-Myc/DDK
Purity:	> 80% as determined by SDS-PAGE and Coomassie blue staining
Concentration:	>0.05 µg/µL as determined by microplate BCA method
Labeling Method:	Labeled with [U- ¹³ C ₆ , ¹⁵ N ₄]-L-Arginine and [U- ¹³ C ₆ , ¹⁵ N ₂]-L-Lysine
Buffer:	25 mM Tris-HCl, 100 mM glycine, pH 7.3
Storage:	Store at -80°C. Avoid repeated freeze-thaw cycles.
Stability:	Stable for 3 months from receipt of products under proper storage and handling conditions.
RefSeq:	<u>NP_001127757</u>
RefSeq Size:	5336
RefSeq ORF:	1305
Synonyms:	ERR-gamma; ERR3; ERRg; ERRgamma; NR3B3



[View online »](#)

Locus ID: 2104

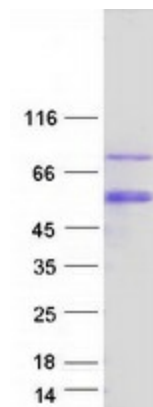
UniProt ID: [P62508](#), [F1D8R6](#)

Cytogenetics: 1q41

Summary: This gene encodes a member of the estrogen receptor-related receptor (ESRR) family, which belongs to the nuclear hormone receptor superfamily. All members of the ESRR family share an almost identical DNA binding domain, which is composed of two C4-type zinc finger motifs. The ESRR members are orphan nuclear receptors; they bind to the estrogen response element and steroidogenic factor 1 response element, and activate genes controlled by both response elements in the absence of any ligands. The ESRR family is closely related to the estrogen receptor (ER) family. They share target genes, co-regulators and promoters, and by targeting the same set of genes, the ESRRs seem to interfere with the ER-mediated estrogen response in various ways. It has been reported that the family member encoded by this gene functions as a transcriptional activator of DNA cytosine-5-methyltransferases 1 (Dnmt1) expression by direct binding to its response elements in the DNMT1 promoters, modulates cell proliferation and estrogen signaling in breast cancer, and negatively regulates bone morphogenetic protein 2-induced osteoblast differentiation and bone formation. Multiple alternatively spliced transcript variants have been identified, which mainly differ at the 5' end and some of which encode protein isoforms differing in the N-terminal region. [provided by RefSeq, Aug 2011]

Protein Families: Druggable Genome, Nuclear Hormone Receptor, Transcription Factors

Product images:



Coomassie blue staining of purified ESRRG protein (Cat# [TP325714]). The protein was produced from HEK293T cells transfected with ESRRG cDNA clone (Cat# [RC225714]) using MegaTran 2.0 (Cat# [TT210002]).