

## Product datasheet for PH325626

### CRPPA (NM\_001101417) Human Mass Spec Standard

#### Product data:

Product Type:	Mass Spec Standards
Description:	ISPD MS Standard C13 and N15-labeled recombinant protein (NP_001094887)
Species:	Human
Expression Host:	HEK293
Expression cDNA Clone or AA Sequence:	RC225626
Predicted MW:	44.2 kDa
Protein Sequence:	>RC225626 representing NM_001101417 Red=Cloning site Green=Tags(s)  MEAGPPGSARPAEPGPCLSGQRGADHTASASLQSVAGTEPGRHPQAVAVLPAGGCGERMGVPTPKQFCP ILERPLISYTLQALERVCIKIDIVVAVTGENMEVMKSIQKYQHKRISLVEAGVTRHRSIFNGLKALAED QINSLKSKPEVVIHDAVRPFVEEGVLLKVVTAAKEHGCSYDLEFGTECLQLALKYCCTKAKLVEGSPD LWKVTKRDLYAAESI IKERISQECVVMDEEDNKHVGHLLLEEVKSELNHVKVTSEALGHAGRHLQQI ILDQCYNFVCVNTTSDFQETQKLLSMLLESSLCILYPVVVVSVHFLDFKLVPPSQKMLMQIREFAKE VKERNILLYGLLISYPQDDQKLQESLRQGAI IASLIKERNISGLIGQLLIA  TRTRPLEQKLI SEEDLAANDILDYKDDDDKV
Tag:	C-Myc/DDK
Purity:	> 80% as determined by SDS-PAGE and Coomassie blue staining
Concentration:	>0.05 µg/µL as determined by microplate BCA method
Labeling Method:	Labeled with [U- <sup>13</sup> C <sub>6</sub> , <sup>15</sup> N <sub>4</sub> ]-L-Arginine and [U- <sup>13</sup> C <sub>6</sub> , <sup>15</sup> N <sub>2</sub> ]-L-Lysine
Buffer:	25 mM Tris-HCl, 100 mM glycine, pH 7.3
Storage:	Store at -80°C. Avoid repeated freeze-thaw cycles.
Stability:	Stable for 3 months from receipt of products under proper storage and handling conditions.
RefSeq:	<a href="#">NP_001094887</a>
RefSeq ORF:	1203
Synonyms:	hISPD; ISPD; LGMDR20; MDDGA7; MDDGC7; Nip
Locus ID:	729920
UniProt ID:	<a href="#">A4D126</a> , <a href="#">A0A140VJM1</a>

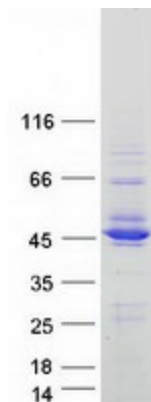


[View online »](#)

Cytogenetics: 7p21.2

Summary: This gene encodes a 2-C-methyl-D-erythritol 4-phosphate cytidyltransferase-like protein. Mutations in this gene are the cause of Walker-Warburg syndrome. Alternate splicing results in multiple transcript variants. [provided by RefSeq, May 2012]

### Product images:



Coomassie blue staining of purified CRPPA protein (Cat# [TP325626]). The protein was produced from HEK293T cells transfected with CRPPA cDNA clone (Cat# [RC225626]) using MegaTran 2.0 (Cat# [TT210002]).