

Product datasheet for PH325610

TACC1 (NM_001122824) Human Mass Spec Standard

Product data:

Product Type:	Mass Spec Standards
Description:	TACC1 MS Standard C13 and N15-labeled recombinant protein (NP_001116296)
Species:	Human
Expression Host:	HEK293
Expression cDNA Clone or AA Sequence:	RC225610
Predicted MW:	43.8 kDa
Protein Sequence:	>RC225610 representing NM_001122824 Red =Cloning site Green =Tags(s)

MAFSPWQILSPVQWAKWTWSAVRGGAGEDEAGGPEGDPPEEDSQAETKSLSFRSGCKVKKHETQSLALD
 ACSRDEGAVISQISDISNRDGHATDEEKLASTSCGQKSAGAEVKGEPEEDLEYFECSNPVSTINHAFSS
 SEAGIEKETCQKMEEDGSTVLGLLESSAEKAPVSVSCGGESPLDGICLSESDKTAVLTLIREEIIITKEIE
 ANEWKKKYEETRQEVLEMRKIVAIEYEKTI AQMIEDEQRTSMTSQKSFQQLTMEKEQALADLNSVERSLSD
 LFRRYENLKGVLGEGFKKNEEALKKCAQDYLRVKQEEQRYQALKIHAEKLDKANEEIAQVRTKAKAESA
 ALHAGLRKEQMKVESLERALQQKNQIEELTKICDELI AKLGKTD

TRTRPLEQKLISEEDLAANDILDYKDDDDKV

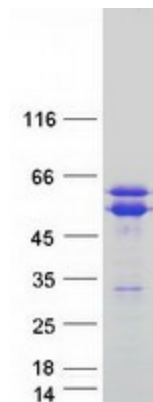
Tag:	C-Myc/DDK
Purity:	> 80% as determined by SDS-PAGE and Coomassie blue staining
Concentration:	>0.05 µg/µL as determined by microplate BCA method
Labeling Method:	Labeled with [U- ¹³ C ₆ , ¹⁵ N ₄]-L-Arginine and [U- ¹³ C ₆ , ¹⁵ N ₂]-L-Lysine
Buffer:	25 mM Tris-HCl, 100 mM glycine, pH 7.3
Storage:	Store at -80°C. Avoid repeated freeze-thaw cycles.
Stability:	Stable for 3 months from receipt of products under proper storage and handling conditions.
RefSeq:	<u>NP_001116296</u>
RefSeq ORF:	1185
Synonyms:	Ga55
Locus ID:	6867
UniProt ID:	<u>Q75410</u>


[View online »](#)

Cytogenetics: 8p11.22

Summary: This locus may represent a breast cancer candidate gene. It is located close to FGFR1 on a region of chromosome 8 that is amplified in some breast cancers. Several transcript variants encoding different isoforms have been found for this gene. [provided by RefSeq, Jun 2017]

Product images:



Coomassie blue staining of purified TACC1 protein (Cat# [TP325610]). The protein was produced from HEK293T cells transfected with TACC1 cDNA clone (Cat# [RC225610]) using MegaTran 2.0 (Cat# [TT210002]).