

Product datasheet for PH325603

NAPE PLD (NAPEPLD) (NM_001122838) Human Mass Spec Standard

Product data:

Product Type:	Mass Spec Standards
Description:	NAPEPLD MS Standard C13 and N15-labeled recombinant protein (NP_001116310)
Species:	Human
Expression Host:	HEK293
Expression cDNA Clone or AA Sequence:	RC225603
Predicted MW:	45.4 kDa
Protein Sequence:	>RC225603 representing NM_001122838 Red=Cloning site Green=Tags(s) MDENESNQLMTSSQYPKEAVRKRQNSARNSGASDSSRFSRKSFKLDYRLEEDVTKSKKGDGRFVNPWP TWKNPSIPNVLRWLIMEKDHSSVPSSKEELDKELPVLKPYFITNPEEAGVREAGLRVTWLGHATVMVEMD ELIFLTDPIFSSRASPSQYMGPKRFRRSPCTISELPPIDAVLISHNHYDHLDYNSVIALNERFGNELRWF VPLGLLDWMQKCGCENVIELDWEENCVPGHDKVTFVFTPSQHWCKRTLMDDNKVLWGSWSVLPWNRRFF FAGDTGYCPAFEEIGKRFGPFDLAAIPIGAYEPRWFMKYQHVDPEEAVRIHTDVQTKKSMAIHWGTFALA NEHYLEPPVKLNEALERYGLNAEDFFVLKHGESRYLNDDENF TRTRPLEQKLI SEEDLAANDILDYKDDDDKV
Tag:	C-Myc/DDK
Purity:	> 80% as determined by SDS-PAGE and Coomassie blue staining
Concentration:	>0.05 µg/µL as determined by microplate BCA method
Labeling Method:	Labeled with [U- ¹³ C ₆ , ¹⁵ N ₄]-L-Arginine and [U- ¹³ C ₆ , ¹⁵ N ₂]-L-Lysine
Buffer:	25 mM Tris-HCl, 100 mM glycine, pH 7.3
Storage:	Store at -80°C. Avoid repeated freeze-thaw cycles.
Stability:	Stable for 3 months from receipt of products under proper storage and handling conditions.
RefSeq:	<u>NP_001116310</u>
RefSeq ORF:	1179
Synonyms:	C7orf18; FMP30; NAPE-PLD
Locus ID:	222236
UniProt ID:	<u>Q6IQ20</u>

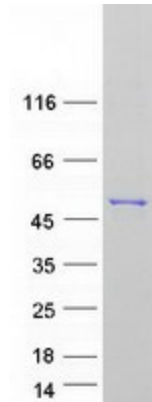


[View online »](#)

Cytogenetics: 7q22.1

Summary: NAPEPLD is a phospholipase D type enzyme that catalyzes the release of N-acylethanolamine (NAE) from N-acyl-phosphatidylethanolamine (NAPE) in the second step of the biosynthesis of N-acylethanolamine (Okamoto et al., 2004 [PubMed 14634025]).[supplied by OMIM, Oct 2008]

Product images:



Coomassie blue staining of purified NAPEPLD protein (Cat# [TP325603]). The protein was produced from HEK293T cells transfected with NAPEPLD cDNA clone (Cat# [RC225603]) using MegaTran 2.0 (Cat# [TT210002]).