

Product datasheet for PH325450

JMJD7 (NM_001114632) Human Mass Spec Standard

Product data:

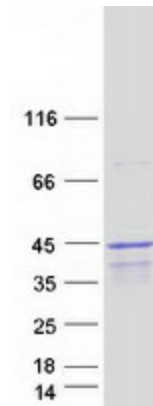
Product Type:	Mass Spec Standards
Description:	JMJD7 MS Standard C13 and N15-labeled recombinant protein (NP_001108104)
Species:	Human
Expression Host:	HEK293
Expression cDNA Clone or AA Sequence:	RC225450
Predicted MW:	35.8 kDa
Protein Sequence:	>RC225450 representing NM_001114632 Red =Cloning site Green =Tags(s) MAEAALEAVRSELREFPAAARELCVPLAVPYLDKPPTPLHFYRDWVCPNRPICIRNALQHPALQKWSLP YFRATVGSTEVSVAVTPDGYADAVRGDRFMMPAERRLPLSFVLDVLEGRAQHPGVLVYVQKQCSNLPSELP QLLPDLESHVPWASEALGKMPDAVNFWLGEAAVTSLHKDHYENLYCVVSGEKHFLFHPPSDRPFIPYEL YTPATYQLTEEGTFKVVDEEAMEKVPWIPLDPLAPDLARYPSYSQAQALRCTVRAGEMLYLPALWFHHVQ QSQGCIAVNFWDMEYDLKYSYFQLLDSLTKASGLD TRTRPLEQKLI SEEDLAANDILDYKDDDDKV
Tag:	C-Myc/DDK
Purity:	> 80% as determined by SDS-PAGE and Coomassie blue staining
Concentration:	>0.05 µg/µL as determined by microplate BCA method
Labeling Method:	Labeled with [U- ¹³ C ₆ , ¹⁵ N ₄]-L-Arginine and [U- ¹³ C ₆ , ¹⁵ N ₂]-L-Lysine
Buffer:	25 mM Tris-HCl, 100 mM glycine, pH 7.3
Storage:	Store at -80°C. Avoid repeated freeze-thaw cycles.
Stability:	Stable for 3 months from receipt of products under proper storage and handling conditions.
RefSeq:	NP_001108104
RefSeq ORF:	948
Locus ID:	100137047
UniProt ID:	P0C870
Cytogenetics:	15q15.1



[View online »](#)

Summary:

This gene encodes a highly conserved protein with a JmjC domain, which are part of the cupin metalloenzyme superfamily. JmjC proteins may function as 2-oxoglutarate-Fe(II)-dependent dioxygenases. Most tissues also express read-through transcripts from this gene into the downstream phospholipase A2, group IVB (cytosolic) gene, some of which may encode fusion proteins combining the N-terminus of this protein with the phospholipase A2, group IVB protein. [provided by RefSeq, Jul 2008]

Product images:

Coomassie blue staining of purified JMJD7 protein (Cat# [TP325450]). The protein was produced from HEK293T cells transfected with JMJD7 cDNA clone (Cat# [RC225450]) using MegaTran 2.0 (Cat# [TT210002]).