

Product datasheet for PH325386

EEF1D (NM_001130055) Human Mass Spec Standard

Product data:

Product Type:	Mass Spec Standards
Description:	EEF1D MS Standard C13 and N15-labeled recombinant protein (NP_001123527)
Species:	Human
Expression Host:	HEK293
Expression cDNA Clone or AA Sequence:	RC225386
Predicted MW:	30.9 kDa
Protein Sequence:	>RC225386 representing NM_001130055 Red=Cloning site Green=Tags(s) MATNFLAHEKIWFDFKFKYDDAERRFYEQMNQPVAGASRQENGASVILRDIARARENIQKSLAGSSGPGAS SGTSGDHGELVVRIASLEVENQSLRGVVQELQQAIKLEARLNVLKSSPGRATAPQTQHVSPMRQVEP PAKKPATPAEDDEDDIDLFGSDNEEDKEAAQLREERLRQYAEKKAKKPALVAKSSILLDVKPWDETD MAQLEACVRSIQLDGLVWGASKLVPVGYGIRKLQIQCVVEDDKVGTDLLEEEITKFEHVQSVDIAAFNK I TRTRPLEQKLISEEDLAANDILDYKDDDDKV
Tag:	C-Myc/DDK
Purity:	> 80% as determined by SDS-PAGE and Coomassie blue staining
Concentration:	>0.05 µg/µL as determined by microplate BCA method
Labeling Method:	Labeled with [U- ¹³ C ₆ , ¹⁵ N ₄]-L-Arginine and [U- ¹³ C ₆ , ¹⁵ N ₂]-L-Lysine
Buffer:	25 mM Tris-HCl, 100 mM glycine, pH 7.3
Storage:	Store at -80°C. Avoid repeated freeze-thaw cycles.
Stability:	Stable for 3 months from receipt of products under proper storage and handling conditions.
RefSeq:	NP_001123527
RefSeq ORF:	843
Synonyms:	EF-1D; EF1D; FP1047
Locus ID:	1936
UniProt ID:	P29692

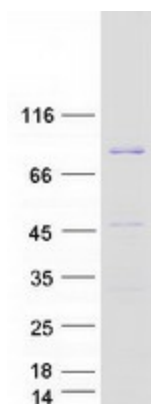


[View online »](#)

Cytogenetics: 8q24.3

Summary: This gene encodes a subunit of the elongation factor-1 complex, which is responsible for the enzymatic delivery of aminoacyl tRNAs to the ribosome. This subunit, delta, functions as guanine nucleotide exchange factor. It is reported that following HIV-1 infection, this subunit interacts with HIV-1 Tat. This interaction results in repression of translation of host cell proteins and enhanced translation of viral proteins. Several alternatively spliced transcript variants encoding multiple isoforms have been found for this gene. Related pseudogenes have been defined on chromosomes 1, 6, 7, 9, 11, 13, 17, 19.[provided by RefSeq, Aug 2010]

Product images:



Coomassie blue staining of purified EEF1D protein (Cat# [TP325386]). The protein was produced from HEK293T cells transfected with EEF1D cDNA clone (Cat# [RC225386]) using MegaTran 2.0 (Cat# [TT210002]).