

Product datasheet for PH325362

HCCS (NM_001122608) Human Mass Spec Standard

Product data:

Product Type:	Mass Spec Standards
Description:	HCCS MS Standard C13 and N15-labeled recombinant protein (NP_001116080)
Species:	Human
Expression Host:	HEK293
Expression cDNA Clone or AA Sequence:	RC225362
Predicted MW:	30.4 kDa
Protein Sequence:	>RC225362 representing NM_001122608 Red=Cloning site Green=Tags(s) MGLSPSAPAVAVQASNASASPPSGCPMHEGKMGKCPVNTEPSGPTCEKKTYSVPAHQERAYEYVECP IRG TAAENKENLDPSNLMPPPNQTPAPDQPFALSTVREESSIPRADSEKKWVYPSEQMFWNAMLKKGW KWKDE DISQKDMYNIIRIHNQNNEQAWKEILKWEALHAAECPCGPSLIRFGGKAKEYSPRARIR SWMGYELPFDR HDWIINRCGTEVRYVIDYDGGEVNKDYQFTILDVRPALDSLAVWDRMKVAV WRWTS TRTRPLEQKLI SEEDLAANDILDYKDDDDKV
Tag:	C-Myc/DDK
Purity:	> 80% as determined by SDS-PAGE and Coomassie blue staining
Concentration:	>0.05 µg/µL as determined by microplate BCA method
Labeling Method:	Labeled with [U- ¹³ C ₆ , ¹⁵ N ₄]-L-Arginine and [U- ¹³ C ₆ , ¹⁵ N ₂]-L-Lysine
Buffer:	25 mM Tris-HCl, 100 mM glycine, pH 7.3
Storage:	Store at -80°C. Avoid repeated freeze-thaw cycles.
Stability:	Stable for 3 months from receipt of products under proper storage and handling conditions.
RefSeq:	NP_001116080
RefSeq ORF:	804
Synonyms:	CCHL; LSDMCA1; MCOPS7; MLS
Locus ID:	3052
UniProt ID:	P53701 , A0A024RBY9
Cytogenetics:	Xp22.2

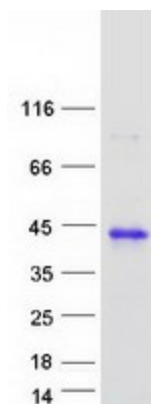


[View online »](#)

Summary: The protein encoded by this gene is an enzyme that covalently links a heme group to the apoprotein of cytochrome c. Defects in this gene are a cause of microphthalmia syndromic type 7 (MCOPS7). Three transcript variants encoding the same protein have been found for this gene. [provided by RefSeq, Jan 2010]

Protein Pathways: Porphyrin and chlorophyll metabolism

Product images:



Coomassie blue staining of purified HCCS protein (Cat# [TP325362]). The protein was produced from HEK293T cells transfected with HCCS cDNA clone (Cat# [RC225362]) using MegaTran 2.0 (Cat# [TT210002]).