

Product datasheet for PH325356

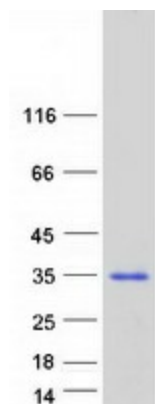
C7orf46 (FAM221A) (NM_001127364) Human Mass Spec Standard

Product data:

Product Type:	Mass Spec Standards
Description:	C7orf46 MS Standard C13 and N15-labeled recombinant protein (NP_001120836)
Species:	Human
Expression Host:	HEK293
Expression cDNA Clone or AA Sequence:	RC225356
Predicted MW:	29.2 kDa
Protein Sequence:	>RC225356 representing NM_001127364 Red =Cloning site Green =Tags(s) MERLTLPLGGAAVDEYLEYRRIVGEDDGGKLFPEEYEEYKRKVLPLRLQNRLFVSWRSPTGMDCKLVG PETLCFCTHRYKQHKTDLEAIPQQCPIDLPCQVTGCQCRAYL YVPLNGSQPIRCRCCKHFADQHSAAFGFT CNTCSKCSGFHSCFTCACGQPAYAHDTVVETKQERLAQEKPVGQDIPYAAMGGLTGFSSLAEGYMRLDDS GIVGTSSQVSSLRRPEEDDMAFFERRYQERMKMEKAAKWKGKAPLPSATKPS TR TRP LEQ KL I S E E D L A A N D I L D Y K D D D D K V
Tag:	C-Myc/DDK
Purity:	> 80% as determined by SDS-PAGE and Coomassie blue staining
Concentration:	>0.05 µg/µL as determined by microplate BCA method
Labeling Method:	Labeled with [U- ¹³ C ₆ , ¹⁵ N ₄]-L-Arginine and [U- ¹³ C ₆ , ¹⁵ N ₂]-L-Lysine
Buffer:	25 mM Tris-HCl, 100 mM glycine, pH 7.3
Storage:	Store at -80°C. Avoid repeated freeze-thaw cycles.
Stability:	Stable for 3 months from receipt of products under proper storage and handling conditions.
RefSeq:	NP_001120836
RefSeq ORF:	786
Synonyms:	C7orf46
Locus ID:	340277
UniProt ID:	A4D161 , A0A024RA57
Cytogenetics:	7p15.3



[View online »](#)

Product images:

Coomassie blue staining of purified FAM221A protein (Cat# [TP325356]). The protein was produced from HEK293T cells transfected with FAM221A cDNA clone (Cat# [RC225356]) using MegaTran 2.0 (Cat# [TT210002]).