

Product datasheet for PH325306

SYCE1L (NM_001129979) Human Mass Spec Standard

Product data:

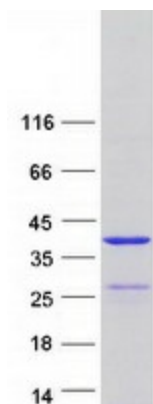
Product Type:	Mass Spec Standards
Description:	SYCE1L MS Standard C13 and N15-labeled recombinant protein (NP_001123451)
Species:	Human
Expression Host:	HEK293
Expression cDNA Clone or AA Sequence:	RC225306
Predicted MW:	27.2 kDa
Protein Sequence:	>RC225306 representing NM_001129979 Red=Cloning site Green=Tags(s) MAGKCLKPLNVEAPEATEEAEGQAKSLKTEDLLAMVIKLQKEGSLEPQIEDLISRINDLQQAKKSSSEELR ETHSLWEALHRELDLNGEKVHLEEVLGKKQEALRILQMHCQEKESEAQRLDVRGQLEDLMGQHKDLWEF HMLEQRLAREIRALERSKEQLLSERRLVRAKLREVERRLHSPPEVEGAMAVNDGLKAELEIFGEQVRSAP EVGAGEGEAGPELPRARDEEDPEPPVAAPDAL TRTRPLEQKLISEEDLAANDILDYKDDDDKV
Tag:	C-Myc/DDK
Purity:	> 80% as determined by SDS-PAGE and Coomassie blue staining
Concentration:	>0.05 µg/µL as determined by microplate BCA method
Labeling Method:	Labeled with [U- ¹³ C ₆ , ¹⁵ N ₄]-L-Arginine and [U- ¹³ C ₆ , ¹⁵ N ₂]-L-Lysine
Buffer:	25 mM Tris-HCl, 100 mM glycine, pH 7.3
Storage:	Store at -80°C. Avoid repeated freeze-thaw cycles.
Stability:	Stable for 3 months from receipt of products under proper storage and handling conditions.
RefSeq:	NP_001123451
RefSeq ORF:	726
Synonyms:	MRP2
Locus ID:	100130958
UniProt ID:	A8MT33
Cytogenetics:	16q23.1



[View online »](#)

Summary: May be involved in meiosis.[UniProtKB/Swiss-Prot Function]

Product images:



Coomassie blue staining of purified SYCE1L protein (Cat# [TP325306]). The protein was produced from HEK293T cells transfected with SYCE1L cDNA clone (Cat# [RC225306]) using MegaTran 2.0 (Cat# [TT210002]).