

Product datasheet for PH325305

SETBP1 (NM_001130110) Human Mass Spec Standard

Product data:

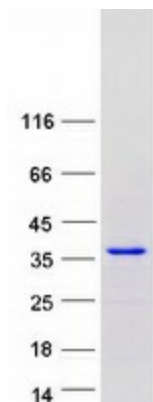
Product Type:	Mass Spec Standards
Description:	SETBP1 MS Standard C13 and N15-labeled recombinant protein (NP_001123582)
Species:	Human
Expression Host:	HEK293
Expression cDNA Clone or AA Sequence:	RC225305
Predicted MW:	26.2 kDa
Protein Sequence:	>RC225305 representing NM_001130110 Red=Cloning site Green=Tags(s) MESRETLSSSRQGGESDFLPVSSAKPPAAPGCAGEPLLSTPGPGKGIPVGGERMEPEEDELGSGRDVD SNSNADSEKWWAGDGLLEEQEFSIKEANFTEGSLKLIQTTRAKKPPKNLENYICPPEIKITIKQSGDQK VSRAGKNSKATKEEERSHSHKKLLTASDLAASDLKGFQPQIKDSSKEEVWKRRGGQIPFKKQFLSQERA MCFSCPRNPFPAKPGSLTLPFHSEPAVWAQEV TRTRPLEQKLI SEEDLAANDILDYKDDDDKV
Tag:	C-Myc/DDK
Purity:	> 80% as determined by SDS-PAGE and Coomassie blue staining
Concentration:	>0.05 µg/µL as determined by microplate BCA method
Labeling Method:	Labeled with [U- ¹³ C ₆ , ¹⁵ N ₄]-L-Arginine and [U- ¹³ C ₆ , ¹⁵ N ₂]-L-Lysine
Buffer:	25 mM Tris-HCl, 100 mM glycine, pH 7.3
Storage:	Store at -80°C. Avoid repeated freeze-thaw cycles.
Stability:	Stable for 3 months from receipt of products under proper storage and handling conditions.
RefSeq:	NP_001123582
RefSeq ORF:	726
Synonyms:	MRD29; SEB
Locus ID:	26040
UniProt ID:	Q9Y6X0
Cytogenetics:	18q12.3



[View online »](#)

Summary:

This gene encodes a protein which contains a several motifs including a ski homology region and a SET-binding region in addition to three nuclear localization signals. The encoded protein has been shown to bind the SET nuclear oncogene which is involved in DNA replication. Mutations in this gene are associated with Schinzel-Giedion midface retraction syndrome. Multiple transcript variants encoding different isoforms have been found for this gene. [provided by RefSeq, Aug 2011]

Product images:

Coomassie blue staining of purified SETBP1 protein (Cat# [TP325305]). The protein was produced from HEK293T cells transfected with SETBP1 cDNA clone (Cat# [RC225305]) using MegaTran 2.0 (Cat# [TT210002]).