

## Product datasheet for PH325300

### NUDT7 (NM\_001105663) Human Mass Spec Standard

#### Product data:

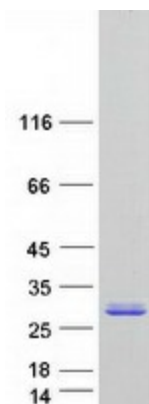
Product Type:	Mass Spec Standards
Description:	NUDT7 MS Standard C13 and N15-labeled recombinant protein (NP_001099133)
Species:	Human
Expression Host:	HEK293
Expression cDNA Clone or AA Sequence:	RC225300
Predicted MW:	26.8 kDa
Protein Sequence:	>RC225300 representing NM_001105663 Red=Cloning site Green=Tags(s)  MSRLGLPEEPVRNSLLDDAKARLRKYDIGGKYSHLPYNKYSVLLPLVAKEGKLHLLFTVRSEKLRRAPGE VCFPGGKRDPTDMDAATALREAQEEVGLRPHQVEVCCCLVPCLIDTDTLITPFVGLIDHNFQAQPNPAE VKDVFLVPLAYFLHPQVHDQHYVTRLGHRFINHIFEYTNPEDGVTYQIKGMTANLAVLVAFIILEKKPTF EVQFNLNDVLASSEELFLKVHKKATSRL  TRTRPLEQKLI SEEDLAANDILDYKDDDDKV
Tag:	C-Myc/DDK
Purity:	> 80% as determined by SDS-PAGE and Coomassie blue staining
Concentration:	>0.05 µg/µL as determined by microplate BCA method
Labeling Method:	Labeled with [U- <sup>13</sup> C <sub>6</sub> , <sup>15</sup> N <sub>4</sub> ]-L-Arginine and [U- <sup>13</sup> C <sub>6</sub> , <sup>15</sup> N <sub>2</sub> ]-L-Lysine
Buffer:	25 mM Tris-HCl, 100 mM glycine, pH 7.3
Storage:	Store at -80°C. Avoid repeated freeze-thaw cycles.
Stability:	Stable for 3 months from receipt of products under proper storage and handling conditions.
RefSeq:	<a href="#">NP_001099133</a>
RefSeq ORF:	714
Locus ID:	283927
UniProt ID:	<a href="#">P0C024</a>
Cytogenetics:	16q23.1



[View online »](#)

**Summary:**

The protein encoded by this gene is a member of the Nudix hydrolase family. Nudix hydrolases eliminate potentially toxic nucleotide metabolites from the cell and regulate the concentrations and availability of many different nucleotide substrates, cofactors, and signaling molecules. Alternatively spliced transcript variants encoding multiple isoforms have been found for this gene. [provided by RefSeq, Aug 2011]

**Product images:**

Coomassie blue staining of purified NUDT7 protein (Cat# [TP325300]). The protein was produced from HEK293T cells transfected with NUDT7 cDNA clone (Cat# [RC225300]) using MegaTran 2.0 (Cat# [TT210002]).