

Product datasheet for PH325268

PRR20D (NM_001130406) Human Mass Spec Standard

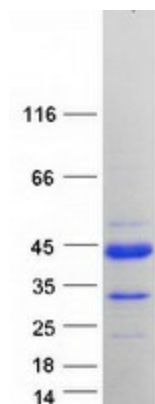
Product data:

Product Type:	Mass Spec Standards
Description:	PRR20D MS Standard C13 and N15-labeled recombinant protein (NP_001123878)
Species:	Human
Expression Host:	HEK293
Expression cDNA Clone or AA Sequence:	RC225268
Predicted MW:	23.1 kDa
Protein Sequence:	<p>>RC225268 representing NM_001130406</p> <p>Red=Cloning site Green=Tags(s)</p> <p>MEEPRPSKRLRSMAPNQASGGPPPEPGCCVADPEGSVEADGPAQPAQPAKPIAYVKPFRRQPPARPESPP PAERGRRRGGSRRPGRGRRRAGPRGDAGQRQGAEGLMAPDVHIQLDHHGEPGHQGEPEITETAAFSLSE TGPPPGTVQEGPGPDVAQPELGFQEPPAAPGPQAVDWQPVLTLYPCIGFRALGDSAVLQVIQTPQGTYVQ GVPVFLTDIAY</p> <p>TRTRPLEQKLISEEDLAANDILDYKDDDDKV</p>
Tag:	C-Myc/DDK
Purity:	> 80% as determined by SDS-PAGE and Coomassie blue staining
Concentration:	>0.05 µg/µL as determined by microplate BCA method
Labeling Method:	Labeled with [U- ¹³ C ₆ , ¹⁵ N ₄]-L-Arginine and [U- ¹³ C ₆ , ¹⁵ N ₂]-L-Lysine
Buffer:	25 mM Tris-HCl, 100 mM glycine, pH 7.3
Storage:	Store at -80°C. Avoid repeated freeze-thaw cycles.
Stability:	Stable for 3 months from receipt of products under proper storage and handling conditions.
RefSeq:	NP_001123878
RefSeq ORF:	663
Synonyms:	PRR20; PRR20A; PRR20B; PRR20C; PRR20E
Locus ID:	729246
UniProt ID:	P86496 , P86481 , P86479 , P86480 , P86478
Cytogenetics:	13q21.1


[View online »](#)

Summary:

This gene is one of five identical loci in a cluster on chromosome 13q21.1. The predicted protein is proline-rich and contains several dopamine D4 receptor signatures and PRINTS domains. [provided by RefSeq, Oct 2008]

Product images:


Coomassie blue staining of purified PRR20D protein (Cat# [TP325268]). The protein was produced from HEK293T cells transfected with PRR20D cDNA clone (Cat# [RC225268]) using MegaTran 2.0 (Cat# [TT210002]).