

## Product datasheet for PH325263

### Claudin 22 (CLDN22) (NM\_001111319) Human Mass Spec Standard

#### Product data:

Product Type:	Mass Spec Standards
Description:	CLDN22 MS Standard C13 and N15-labeled recombinant protein (NP_001104789)
Species:	Human
Expression Host:	HEK293
Expression cDNA Clone or AA Sequence:	RC225263
Predicted MW:	24.3 kDa
Protein Sequence:	>RC225263 representing NM_001111319 Red=Cloning site Green=Tags(s)  MALVFRTVAQLAGVSLSLGWL SCLTNYLPHWKNL NDLNEMENWTMGLWQTCVIQEEVGMQCKDFDSF LALPAELRVSRILMFLSNGLGFLGLLVSGFGLDCLRIGESQRDLKRRLILGGILSWASGV TALVPVSWV AHKTVQEFWDENVPDFVPRWFG EALFLGWFAGLSLLGGCLLHCAACSSHAPLASGHYAVAQTQDHHQE LETRNTNLKH  TRTRPLEQKLI SEEDLAANDILDYKDDDDKV
Tag:	C-Myc/DDK
Purity:	> 80% as determined by SDS-PAGE and Coomassie blue staining
Concentration:	>0.05 µg/µL as determined by microplate BCA method
Labeling Method:	Labeled with [U- <sup>13</sup> C <sub>6</sub> , <sup>15</sup> N <sub>4</sub> ]-L-Arginine and [U- <sup>13</sup> C <sub>6</sub> , <sup>15</sup> N <sub>2</sub> ]-L-Lysine
Buffer:	25 mM Tris-HCl, 100 mM glycine, pH 7.3
Storage:	Store at -80°C. Avoid repeated freeze-thaw cycles.
Stability:	Stable for 3 months from receipt of products under proper storage and handling conditions.
RefSeq:	<a href="#">NP_001104789</a>
RefSeq ORF:	660
Synonyms:	CLDN21
Locus ID:	53842
UniProt ID:	<a href="#">Q8N7P3</a>
Cytogenetics:	4q35.1



[View online »](#)

**Summary:**

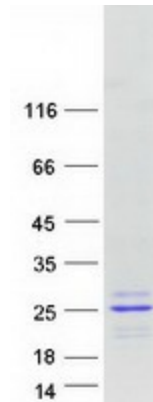
This gene encodes a member of the claudin family. Claudins are integral membrane proteins and components of tight junction strands. Tight junction strands serve as a physical barrier to prevent solutes and water from passing freely through the paracellular space between epithelial or endothelial cell sheets, and also play critical roles in maintaining cell polarity and signal transductions. This gene is intronless and overlaps the 3' UTR of the WWC2 gene (GeneID: 80014) on the opposite strand. [provided by RefSeq, Aug 2010]

**Protein Families:**

Transmembrane

**Protein Pathways:**

Cell adhesion molecules (CAMs), Leukocyte transendothelial migration, Tight junction

**Product images:**

Coomassie blue staining of purified CLDN22 protein (Cat# [TP325263]). The protein was produced from HEK293T cells transfected with CLDN22 cDNA clone (Cat# [RC225263]) using MegaTran 2.0 (Cat# [TT210002]).