

Product datasheet for PH325261

SYCE2 (NM_001105578) Human Mass Spec Standard

Product data:

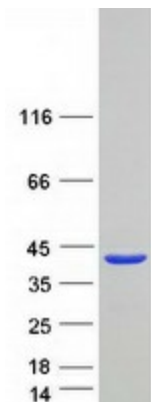
Product Type:	Mass Spec Standards
Description:	SYCE2 MS Standard C13 and N15-labeled recombinant protein (NP_001099048)
Species:	Human
Expression Host:	HEK293
Expression cDNA Clone or AA Sequence:	RC225261
Predicted MW:	24.5 kDa
Protein Sequence:	>RC225261 representing NM_001105578 Red=Cloning site Green=Tags(s) MERQGVDPVPHVKCKDQEPQPLGESKEHPRWEENCEEEAGGGPASASCQLTVLEKSGLYFSSLDSSIDIL QKRAQELIENINKSRQKDHALMTNFRNSLTKVSDLTEKLEERIYQIYNDHNKIIQEKLQFTQKMAKIS HLETCLKQVCHSVETVYKDLCLQPEQSLRLRWGPDHSRGKSPPRPGNSQPPDVFVSSVAETTSQATASEV QTNRDGE TRTRPLEQKLI SEEDLAANDILDYKDDDDKV
Tag:	C-Myc/DDK
Purity:	> 80% as determined by SDS-PAGE and Coomassie blue staining
Concentration:	>0.05 µg/µL as determined by microplate BCA method
Labeling Method:	Labeled with [U- ¹³ C ₆ , ¹⁵ N ₄]-L-Arginine and [U- ¹³ C ₆ , ¹⁵ N ₂]-L-Lysine
Buffer:	25 mM Tris-HCl, 100 mM glycine, pH 7.3
Storage:	Store at -80°C. Avoid repeated freeze-thaw cycles.
Stability:	Stable for 3 months from receipt of products under proper storage and handling conditions.
RefSeq:	NP_001099048
RefSeq ORF:	654
Synonyms:	CESC1
Locus ID:	256126
UniProt ID:	Q6PIF2
Cytogenetics:	19p13.13



[View online »](#)

Summary:

The protein encoded by this gene is part of the synaptonemal complex formed between homologous chromosomes during meiotic prophase. The encoded protein associates with SYCP1 and SYCE1 and is found only where chromosome cores are synapsed. [provided by RefSeq, Dec 2012]

Product images:

Coomassie blue staining of purified SYCE2 protein (Cat# [TP325261]). The protein was produced from HEK293T cells transfected with SYCE2 cDNA clone (Cat# [RC225261]) using MegaTran 2.0 (Cat# [TT210002]).