

Product datasheet for PH325253

MAD2L2 (NM_001127325) Human Mass Spec Standard

Product data:

Product Type:	Mass Spec Standards
Description:	MAD2L2 MS Standard C13 and N15-labeled recombinant protein (NP_001120797)
Species:	Human
Expression Host:	HEK293
Expression cDNA Clone or AA Sequence:	RC225253
Predicted MW:	24.3 kDa
Protein Sequence:	<p>>RC225253 protein sequence</p> <p>Red=Cloning site Green=Tags(s)</p> <p>MTTLTRQDLNFGQVVADVLCEFLAVAVHLILYVREYYPVGIFQKRKKYNVPVQMSCHPELNQYIQDTLHC VKPLLEKNDVEKVVVVILDKEHRPVEKFVFEITQPPLLSISSDSSL SHVEQLLRAFIKISVCDVLDHN PPGCTFTVLVHTREAATRNMEKIQVIKDFPWILADEQDVHMDPRLIPLKMTSDILKMQLYVEERAHKG S</p> <p>TRTRPLEQKLISEEDLAANDILDYKDDDDKV</p>
Tag:	C-Myc/DDK
Purity:	> 80% as determined by SDS-PAGE and Coomassie blue staining
Concentration:	>0.05 µg/µL as determined by microplate BCA method
Labeling Method:	Labeled with [U- ¹³ C ₆ , ¹⁵ N ₄]-L-Arginine and [U- ¹³ C ₆ , ¹⁵ N ₂]-L-Lysine
Buffer:	25 mM Tris-HCl, 100 mM glycine, pH 7.3
Storage:	Store at -80°C. Avoid repeated freeze-thaw cycles.
Stability:	Stable for 3 months from receipt of products under proper storage and handling conditions.
RefSeq:	NP_001120797
RefSeq Size:	1196
RefSeq ORF:	633
Synonyms:	FANCV; MAD2B; POLZ2; REV7
Locus ID:	10459
UniProt ID:	Q9UI95 , A0A024R4I4


[View online »](#)

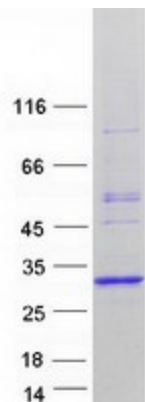
Cytogenetics: 1p36.22

Summary: The protein encoded by this gene is a component of the mitotic spindle assembly checkpoint that prevents the onset of anaphase until all chromosomes are properly aligned at the metaphase plate. The encoded protein, which is similar to MAD2L1, is capable of interacting with ADAM9, ADAM15, REV1, and REV3 proteins. [provided by RefSeq, Jul 2008]

Protein Families: Druggable Genome

Protein Pathways: Cell cycle, Oocyte meiosis, Progesterone-mediated oocyte maturation

Product images:



Coomassie blue staining of purified MAD2L2 protein (Cat# [TP325253]). The protein was produced from HEK293T cells transfected with MAD2L2 cDNA clone (Cat# [RC225253]) using MegaTran 2.0 (Cat# [TT210002]).