

Product datasheet for PH325217

CSRP3 (NM_001127656) Human Mass Spec Standard

Product data:

Product Type:	Mass Spec Standards
Description:	CSRP3 MS Standard C13 and N15-labeled recombinant protein (NP_001121128)
Species:	Human
Expression Host:	HEK293
Expression cDNA Clone or AA Sequence:	RC225217
Predicted MW:	21 kDa
Protein Sequence:	>RC225217 protein sequence Red=Cloning site Green=Tags(s) MPNWGGGAKCGACEKTVYHAEEIQCNRSFHKTCFHCMACRKALDSTTVAAHESEIYCKVCYGRRYGPKG IGYGQGAGCLSTDTGEHLGLQFQQSPKPARSVTTSNPSKFATAKGESEKPCRCGKSVYAAEKVMGGGKPKW HKTCFRCAICGKSLESTNVTDKDGELYCKVYAKNFGPTGIGFGGLTQQVEKKE TRTRPLEQKLISEEDLAANDILDYKDDDDKV
Tag:	C-Myc/DDK
Purity:	> 80% as determined by SDS-PAGE and Coomassie blue staining
Concentration:	>0.05 µg/µL as determined by microplate BCA method
Labeling Method:	Labeled with [U- ¹³ C ₆ , ¹⁵ N ₄]-L-Arginine and [U- ¹³ C ₆ , ¹⁵ N ₂]-L-Lysine
Buffer:	25 mM Tris-HCl, 100 mM glycine, pH 7.3
Storage:	Store at -80°C. Avoid repeated freeze-thaw cycles.
Stability:	Stable for 3 months from receipt of products under proper storage and handling conditions.
RefSeq:	NP_001121128
RefSeq Size:	1464
RefSeq ORF:	582
Synonyms:	CLP; CMD1M; CMH12; CRP3; LMO4; MLP
Locus ID:	8048
UniProt ID:	P50461

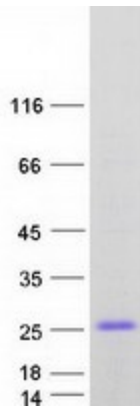


[View online »](#)

Cytogenetics: 11p15.1

Summary: This gene encodes a member of the CSRP family of LIM domain proteins, which may be involved in regulatory processes important for development and cellular differentiation. The LIM/double zinc-finger motif found in this protein is found in a group of proteins with critical functions in gene regulation, cell growth, and somatic differentiation. Mutations in this gene are thought to cause heritable forms of hypertrophic cardiomyopathy (HCM) and dilated cardiomyopathy (DCM) in humans. Alternatively spliced transcript variants with different 5' UTR, but encoding the same protein, have been found for this gene. [provided by RefSeq, Jul 2008]

Product images:



Coomassie blue staining of purified CSRP3 protein (Cat# [TP325217]). The protein was produced from HEK293T cells transfected with CSRP3 cDNA clone (Cat# [RC225217]) using MegaTran 2.0 (Cat# [TT210002]).