

Product datasheet for PH325216

C7orf50 (NM_001134396) Human Mass Spec Standard

Product data:

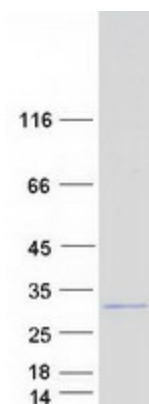
Product Type:	Mass Spec Standards
Description:	C7orf50 MS Standard C13 and N15-labeled recombinant protein (NP_001127868)
Species:	Human
Expression Host:	HEK293
Expression cDNA Clone or AA Sequence:	RC225216
Predicted MW:	22.1 kDa
Protein Sequence:	>RC225216 protein sequence Red=Cloning site Green=Tags(s) MAKQKRKVPEVTEKKNKLLKASAEGPLLGPEAAPS GEGAGSKGEAVLRPGLDAEPELSPEEQRVLERKLL KKERKKEERQRLREAGLVAQHPPARRSGAELALDYLCRWAQKHKNWRFQKTRQTWLLHMYDSDKVPDEH FSTLLAYLEGLQGRARELTVQKAEALMRELDDEGSDPPLPGRAQRIRQVLQLLS TRTRPLEQKLI SEEDLAANDILDYKDDDDKV
Tag:	C-Myc/DDK
Purity:	> 80% as determined by SDS-PAGE and Coomassie blue staining
Concentration:	>0.05 µg/µL as determined by microplate BCA method
Labeling Method:	Labeled with [U- 13C6, 15N4]-L-Arginine and [U- 13C6, 15N2]-L-Lysine
Buffer:	25 mM Tris-HCl, 100 mM glycine, pH 7.3
Storage:	Store at -80°C. Avoid repeated freeze-thaw cycles.
Stability:	Stable for 3 months from receipt of products under proper storage and handling conditions.
RefSeq:	NP_001127868
RefSeq Size:	1282
RefSeq ORF:	582
Synonyms:	YCR016W
Locus ID:	84310
UniProt ID:	Q9BRJ6



[View online »](#)

Cytogenetics: 7p22.3

Product images:



Coomassie blue staining of purified C7orf50 protein (Cat# [TP325216]). The protein was produced from HEK293T cells transfected with C7orf50 cDNA clone (Cat# [RC225216]) using MegaTran 2.0 (Cat# [TT210002]).