

Product datasheet for PH325198

CBX1 (NM_001127228) Human Mass Spec Standard

Product data:

Product Type:	Mass Spec Standards
Description:	CBX1 MS Standard C13 and N15-labeled recombinant protein (NP_001120700)
Species:	Human
Expression Host:	HEK293
Expression cDNA Clone or AA Sequence:	RC225198
Predicted MW:	21.4 kDa
Protein Sequence:	>RC225198 protein sequence Red=Cloning site Green=Tags(s) MGKKQNKKKVEEVLEEEEEYVVEKVLDRRVVKGKVEYLLKWKGFSDENTWEPEENLDCPDLIAEFLQS QKTAHETDKSEGGKRKADSDSEDKGEESKPKKKKEESEKPRGFARGLEPERIIGATDSSGELMFLMKWKN SDEADLVPKAEANVKCPQVVISFYEERLTWHSYPSEDDDKDDKN TRTRPLEQKLISEEDLAANDILDYKDDDDKV
Tag:	C-Myc/DDK
Purity:	> 80% as determined by SDS-PAGE and Coomassie blue staining
Concentration:	>0.05 µg/µL as determined by microplate BCA method
Labeling Method:	Labeled with [U- 13C6, 15N4]-L-Arginine and [U- 13C6, 15N2]-L-Lysine
Buffer:	25 mM Tris-HCl, 100 mM glycine, pH 7.3
Storage:	Store at -80°C. Avoid repeated freeze-thaw cycles.
Stability:	Stable for 3 months from receipt of products under proper storage and handling conditions.
RefSeq:	NP_001120700
RefSeq Size:	2253
RefSeq ORF:	555
Synonyms:	CBX; HP1-BETA; HP1Hs-beta; HP1Hsbeta; M31; MOD1; p25beta
Locus ID:	10951
UniProt ID:	P83916 , Q6IBN6

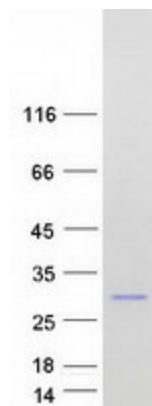


[View online »](#)

Cytogenetics: 17q21.32

Summary: This gene encodes a highly conserved nonhistone protein, which is a member of the heterochromatin protein family. The protein is enriched in the heterochromatin and associated with centromeres. The protein has a single N-terminal chromodomain which can bind to histone proteins via methylated lysine residues, and a C-terminal chromo shadow-domain (CSD) which is responsible for the homodimerization and interaction with a number of chromatin-associated nonhistone proteins. The protein may play an important role in the epigenetic control of chromatin structure and gene expression. Several related pseudogenes are located on chromosomes 1, 3, and X. Multiple alternatively spliced variants, encoding the same protein, have been identified. [provided by RefSeq, Jul 2008]

Product images:



Coomassie blue staining of purified CBX1 protein (Cat# [TP325198]). The protein was produced from HEK293T cells transfected with CBX1 cDNA clone (Cat# [RC225198]) using MegaTran 2.0 (Cat# [TT210002]).