

## Product datasheet for PH325182

### CLEC2A (NM\_001130711) Human Mass Spec Standard

#### Product data:

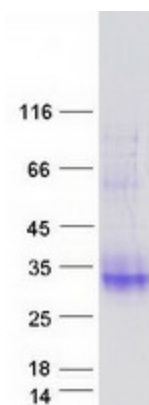
Product Type:	Mass Spec Standards
Description:	CLEC2A MS Standard C13 and N15-labeled recombinant protein (NP_001124183)
Species:	Human
Expression Host:	HEK293
Expression cDNA Clone or AA Sequence:	RC225182
Predicted MW:	19.8 kDa
Protein Sequence:	>RC225182 representing NM_001130711 Red=Cloning site Green=Tags(s)  MINPELRDGRADGFHRIVPKLIQNWKIGLMCFLSIIITTVCIIMIATWSKHAKPVACSGDWLGVRDKCF YFSDTRNWTASKIFCSLQKAELAQIDTQEDMEFLKRYAGTDMHWIGLSRKQGD SWKWTNGTTFNWFEI IGNGSFAFLSADGVHSSRGFIDIKWICKPKYFL  TRTRPLEQKLISEEDLAANDILDYKDDDDKV
Tag:	C-Myc/DDK
Purity:	> 80% as determined by SDS-PAGE and Coomassie blue staining
Concentration:	>0.05 µg/µL as determined by microplate BCA method
Labeling Method:	Labeled with [U- 13C6, 15N4]-L-Arginine and [U- 13C6, 15N2]-L-Lysine
Buffer:	25 mM Tris-HCl, 100 mM glycine, pH 7.3
Storage:	Store at -80°C. Avoid repeated freeze-thaw cycles.
Stability:	Stable for 3 months from receipt of products under proper storage and handling conditions.
RefSeq:	<a href="#">NP_001124183</a>
RefSeq ORF:	522
Synonyms:	INPE5792; KACL; PILAR; UNQ5792
Locus ID:	387836
UniProt ID:	<a href="#">Q6UVW9</a>
Cytogenetics:	12p13.31



[View online »](#)

**Summary:**

CLEC2A belongs to the CLEC2 family of activation-induced, natural killer gene complex-encoded C-type lectin-like receptors (Spreu et al., 2007 [PubMed 18046548]). [supplied by OMIM, May 2008]

**Product images:**

Coomassie blue staining of purified CLEC2A protein (Cat# [TP325182]). The protein was produced from HEK293T cells transfected with CLEC2A cDNA clone (Cat# [RC225182]) using MegaTran 2.0 (Cat# [TT210002]).