

## Product datasheet for PH325102

### NHLH2 (NM\_001111061) Human Mass Spec Standard

#### Product data:

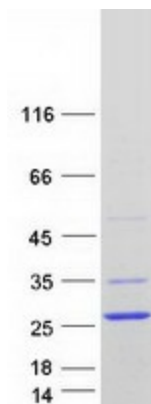
Product Type:	Mass Spec Standards
Description:	NHLH2 MS Standard C13 and N15-labeled recombinant protein (NP_001104531)
Species:	Human
Expression Host:	HEK293
Expression cDNA Clone or AA Sequence:	RC225102
Predicted MW:	15 kDa
Protein Sequence:	>RC225102 protein sequence Red=Cloning site Green=Tags(s)  MMLSPDQAADSDHPSSAHSDPESLGGTDTKVLGSVSDLEPVVEEAEGDGKGGRAALYPHPQQLSREEKRR RRRATAKYRSAHATRERIRVEAFNLAFAELRKLLPTLPPDKKLSKIEILRLAICYISYLNHVLDV  TRTRPLEQKLISEEDLAANDILDYKDDDDKV
Tag:	C-Myc/DDK
Purity:	> 80% as determined by SDS-PAGE and Coomassie blue staining
Concentration:	>0.05 µg/µL as determined by microplate BCA method
Labeling Method:	Labeled with [U- 13C6, 15N4]-L-Arginine and [U- 13C6, 15N2]-L-Lysine
Buffer:	25 mM Tris-HCl, 100 mM glycine, pH 7.3
Storage:	Store at -80°C. Avoid repeated freeze-thaw cycles.
Stability:	Stable for 3 months from receipt of products under proper storage and handling conditions.
RefSeq:	<a href="#">NP_001104531</a>
RefSeq Size:	2501
RefSeq ORF:	405
Synonyms:	bHLHa34; HEN2; NSCL2
Locus ID:	4808
UniProt ID:	<a href="#">Q02577</a> , <a href="#">A1PLF1</a>
Cytogenetics:	1p13.1



[View online »](#)

**Summary:**

May serve as DNA-binding protein and may be involved in the control of cell-type determination, possibly within the developing nervous system.[UniProtKB/Swiss-Prot Function]

**Product images:**

Coomassie blue staining of purified NHLH2 protein (Cat# [TP325102]). The protein was produced from HEK293T cells transfected with NHLH2 cDNA clone (Cat# [RC225102]) using MegaTran 2.0 (Cat# [TT210002]).