

## Product datasheet for PH325082

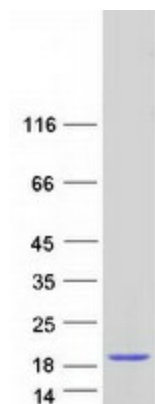
### KHDC1L (NM\_001126063) Human Mass Spec Standard

#### Product data:

Product Type:	Mass Spec Standards
Description:	KHDC1L MS Standard C13 and N15-labeled recombinant protein (NP_001119535)
Species:	Human
Expression Host:	HEK293
Expression cDNA Clone or AA Sequence:	RC225082
Predicted MW:	14.4 kDa
Protein Sequence:	>RC225082 representing NM_001126063 <b>Red</b> =Cloning site <b>Green</b> =Tags(s)  MAVGTSALSKEPWWTLPENFHSPMVFHMEEDQEELIFGLDDTYLRCEIHSHTLIQLERCFTATGQTRVT VVGPPMAKQWLLLMFHCVGSQDSKCHARGLKMLERVRSQPLTNDLVTSLPPYTGD  <b>TR</b> TRPLE <b>QKLISEEDLAANDILDYKDDDDK</b> V
Tag:	C-Myc/DDK
Purity:	> 80% as determined by SDS-PAGE and Coomassie blue staining
Concentration:	>0.05 µg/µL as determined by microplate BCA method
Labeling Method:	Labeled with [U- 13C6, 15N4]-L-Arginine and [U- 13C6, 15N2]-L-Lysine
Buffer:	25 mM Tris-HCl, 100 mM glycine, pH 7.3
Storage:	Store at -80°C. Avoid repeated freeze-thaw cycles.
Stability:	Stable for 3 months from receipt of products under proper storage and handling conditions.
RefSeq:	<a href="#">NP_001119535</a>
RefSeq ORF:	384
Locus ID:	100129128
UniProt ID:	<a href="#">Q5JSQ8</a>
Cytogenetics:	6q13



[View online »](#)

**Product images:**

Coomassie blue staining of purified KHDC1L protein (Cat# [TP325082]). The protein was produced from HEK293T cells transfected with KHDC1L cDNA clone (Cat# [RC225082]) using MegaTran 2.0 (Cat# [TT210002]).