

Product datasheet for PH325060

YPEL5 (NM_001127400) Human Mass Spec Standard

Product data:

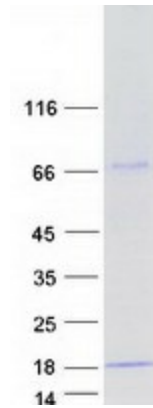
Product Type:	Mass Spec Standards
Description:	YPEL5 MS Standard C13 and N15-labeled recombinant protein (NP_001120872)
Species:	Human
Expression Host:	HEK293
Expression cDNA Clone or AA Sequence:	RC225060
Predicted MW:	13.8 kDa
Protein Sequence:	>RC225060 protein sequence Red=Cloning site Green=Tags(s) MGRIFLDHIGGTRLFSCANCDTILTNRSELISTRFTGATGRAFLFNKVVNLQYSEVQDRVMLTGRHMVRD VSCKNCNSKLGWIYEFATEDSQRYKEGRVILERALVRESEGFEEHVPSDNS TRTRPLEQKLISEEDLAANDILDYKDDDDKV
Tag:	C-Myc/DDK
Purity:	> 80% as determined by SDS-PAGE and Coomassie blue staining
Concentration:	>0.05 µg/µL as determined by microplate BCA method
Labeling Method:	Labeled with [U- 13C6, 15N4]-L-Arginine and [U- 13C6, 15N2]-L-Lysine
Buffer:	25 mM Tris-HCl, 100 mM glycine, pH 7.3
Storage:	Store at -80°C. Avoid repeated freeze-thaw cycles.
Stability:	Stable for 3 months from receipt of products under proper storage and handling conditions.
RefSeq:	NP_001120872
RefSeq Size:	2578
RefSeq ORF:	363
Synonyms:	CGI-127
Locus ID:	51646
UniProt ID:	P62699
Cytogenetics:	2p23.1



[View online »](#)

Summary:

Component of the CTLH E3 ubiquitin-protein ligase complex that selectively accepts ubiquitin from UBE2H and mediates ubiquitination and subsequent proteasomal degradation of the transcription factor HBP1 (PubMed:29911972). Required for normal cell proliferation (By similarity).[UniProtKB/Swiss-Prot Function]

Product images:

Coomassie blue staining of purified YPEL5 protein (Cat# [TP325060]). The protein was produced from HEK293T cells transfected with YPEL5 cDNA clone (Cat# [RC225060]) using MegaTran 2.0 (Cat# [TT210002]).