

Product datasheet for PH325029

Glutaredoxin 1 (GLRX) (NM_001118890) Human Mass Spec Standard

Product data:

Product Type:	Mass Spec Standards
Description:	GLRX MS Standard C13 and N15-labeled recombinant protein (NP_001112362)
Species:	Human
Expression Host:	HEK293
Expression cDNA Clone or AA Sequence:	RC225029
Predicted MW:	11.8 kDa
Protein Sequence:	>RC225029 protein sequence Red=Cloning site Green=Tags(s) MAQEFVNCKIQPGKVVVFIKPTCPYCRRAQEILSQLPIKQGLLEFVDITATNHTNEIQDYLLQQLTGARTV PRVFIGKDCIGGCSDLVSLQQSGELLTRLKQIGALQ TRTRPLEQKLI SEEDLAANDILDYKDDDDKV
Tag:	C-Myc/DDK
Purity:	> 80% as determined by SDS-PAGE and Coomassie blue staining
Concentration:	>0.05 µg/µL as determined by microplate BCA method
Labeling Method:	Labeled with [U- 13C6, 15N4]-L-Arginine and [U- 13C6, 15N2]-L-Lysine
Buffer:	25 mM Tris-HCl, 100 mM glycine, pH 7.3
Storage:	Store at -80°C. Avoid repeated freeze-thaw cycles.
Stability:	Stable for 3 months from receipt of products under proper storage and handling conditions.
RefSeq:	NP_001112362
RefSeq Size:	1093
RefSeq ORF:	318
Synonyms:	GRX; GRX1
Locus ID:	2745
UniProt ID:	P35754 , A0A024RAM2
Cytogenetics:	5q15



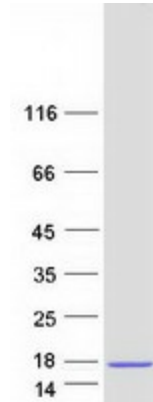
[View online »](#)

Summary:

This gene encodes a member of the glutaredoxin family. The encoded protein is a cytoplasmic enzyme catalyzing the reversible reduction of glutathione-protein mixed disulfides. This enzyme highly contributes to the antioxidant defense system. It is crucial for several signalling pathways by controlling the S-glutathionylation status of signalling mediators. It is involved in beta-amyloid toxicity and Alzheimer's disease. Multiple alternatively spliced transcript variants encoding the same protein have been identified. [provided by RefSeq, Aug 2011]

Protein Families:

Druggable Genome

Product images:

Coomassie blue staining of purified GLRX protein (Cat# [TP325029]). The protein was produced from HEK293T cells transfected with GLRX cDNA clone (Cat# [RC225029]) using MegaTran 2.0 (Cat# [TT210002]).