

## Product datasheet for PH325005

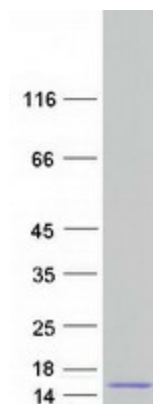
### SPINT3 (NM\_006652) Human Mass Spec Standard

#### Product data:

|                                       |  |
|---------------------------------------|--|
| Product Type:                         | Mass Spec Standards  |
| Description:                          | SPINT3 MS Standard C13 and N15-labeled recombinant protein (NP_006643)   |
| Species:                              | Human  |
| Expression Host:                      | HEK293   |
| Expression cDNA Clone or AA Sequence: | RC225005   |
| Predicted MW:                         | 10.1 kDa   |
| Protein Sequence:                     | >RC225005 representing NM_006652<br>Red=Cloning site Green=Tags(s)<br><br>MQLQASLSFLLILTLCLELRSELARDTIKDLLPNVCAFPMEKGPCQTYMTRWFFNFETGECELFAYGGCG<br>GNSNFLRKEKCEKFKFT<br><br>TRTRPLEQKLISEEDLAANDILDYKDDDDKV |
| Tag:                                  | C-Myc/DDK  |
| Purity:                               | > 80% as determined by SDS-PAGE and Coomassie blue staining  |
| Concentration:                        | >0.05 µg/µL as determined by microplate BCA method   |
| Labeling Method:                      | Labeled with [U- 13C6, 15N4]-L-Arginine and [U- 13C6, 15N2]-L-Lysine   |
| Buffer:                               | 25 mM Tris-HCl, 100 mM glycine, pH 7.3   |
| Storage:                              | Store at -80°C. Avoid repeated freeze-thaw cycles.   |
| Stability:                            | Stable for 3 months from receipt of products under proper storage and handling conditions.   |
| RefSeq:                               | <a href="#">NP_006643</a>  |
| RefSeq ORF:                           | 267  |
| Synonyms:                             | HKIB9  |
| Locus ID:                             | 10816  |
| UniProt ID:                           | <a href="#">P49223</a>   |
| Cytogenetics:                         | 20q13.12   |



[View online »](#)

**Product images:**

Coomassie blue staining of purified SPINT3 protein (Cat# [TP325005]). The protein was produced from HEK293T cells transfected with SPINT3 cDNA clone (Cat# [RC225005]) using MegaTran 2.0 (Cat# [TT210002]).