

## Product datasheet for PH325004

### SYCE3 (NM\_001123225) Human Mass Spec Standard

#### Product data:

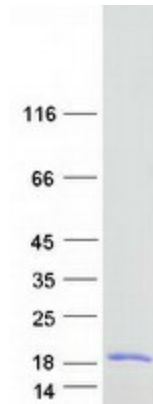
Product Type:	Mass Spec Standards
Description:	C22orf41 MS Standard C13 and N15-labeled recombinant protein (NP_001116697)
Species:	Human
Expression Host:	HEK293
Expression cDNA Clone or AA Sequence:	RC225004
Predicted MW:	10.4 kDa
Protein Sequence:	>RC225004 representing NM_001123225 Red=Cloning site Green=Tags(s)  MDDADPEERNYDNMLKMLSDLNKDLEKLLLEEMEKISVQATWMAYDMVVMRTNPTLAESMRRLLEDAFVNCK EEMEKNWQELLHETKQRL  TRTRPLEQKLISEEDLAANDILDYKDDDDKV
Tag:	C-Myc/DDK
Purity:	> 80% as determined by SDS-PAGE and Coomassie blue staining
Concentration:	>0.05 µg/µL as determined by microplate BCA method
Labeling Method:	Labeled with [U- 13C6, 15N4]-L-Arginine and [U- 13C6, 15N2]-L-Lysine
Buffer:	25 mM Tris-HCl, 100 mM glycine, pH 7.3
Storage:	Store at -80°C. Avoid repeated freeze-thaw cycles.
Stability:	Stable for 3 months from receipt of products under proper storage and handling conditions.
RefSeq:	<a href="#">NP_001116697</a>
RefSeq ORF:	264
Synonyms:	C22orf41; THEG2
Locus ID:	644186
UniProt ID:	<a href="#">A1L190</a>
Cytogenetics:	22q13.33



[View online »](#)

**Summary:**

Major component of the transverse central element of synaptonemal complexes (SCS), formed between homologous chromosomes during meiotic prophase. Required for chromosome loading of the central element-specific SCS proteins, and for initiating synapsis between homologous chromosomes. Chromosome loading appears to require SYCP1. Required for fertility.[UniProtKB/Swiss-Prot Function]

**Product images:**

Coomassie blue staining of purified SYCE3 protein (Cat# [TP325004]). The protein was produced from HEK293T cells transfected with SYCE3 cDNA clone (Cat# [RC225004]) using MegaTran 2.0 (Cat# [TT210002]).