

## Product datasheet for PH324998

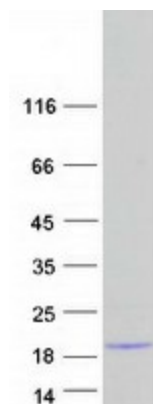
### LCE6A (NM\_001128600) Human Mass Spec Standard

#### Product data:

Product Type:	Mass Spec Standards
Description:	LCE6A MS Standard C13 and N15-labeled recombinant protein (NP_001122072)
Species:	Human
Expression Host:	HEK293
Expression cDNA Clone or AA Sequence:	RC224998
Predicted MW:	8.8 kDa
Protein Sequence:	>RC224998 representing NM_001128600 Red=Cloning site Green=Tags(s)  MSQQKQSWKPPNPKCSPPQRSNPCLAPYSTPCGAPHSEGCSSSRPEVQKPRRARQKLRCLSRGTTY HCKEEECEGD  TRTRPLEQKLI SEEDLAANDILDYKDDDDKV
Tag:	C-Myc/DDK
Purity:	> 80% as determined by SDS-PAGE and Coomassie blue staining
Concentration:	>0.05 µg/µL as determined by microplate BCA method
Labeling Method:	Labeled with [U- 13C6, 15N4]-L-Arginine and [U- 13C6, 15N2]-L-Lysine
Buffer:	25 mM Tris-HCl, 100 mM glycine, pH 7.3
Storage:	Store at -80°C. Avoid repeated freeze-thaw cycles.
Stability:	Stable for 3 months from receipt of products under proper storage and handling conditions.
RefSeq:	<a href="#">NP_001122072</a>
RefSeq ORF:	240
Synonyms:	C1orf44
Locus ID:	448835
UniProt ID:	<a href="#">A0A183</a>
Cytogenetics:	1q21.3
Summary:	Precursors of the cornified envelope of the stratum corneum.[UniProtKB/Swiss-Prot Function]



[View online »](#)

**Product images:**

Coomassie blue staining of purified LCE6A protein (Cat# [TP324998]). The protein was produced from HEK293T cells transfected with LCE6A cDNA clone (Cat# [RC224998]) using MegaTran 2.0 (Cat# [TT210002]).