

## Product datasheet for **PH324969**

### Sialoadhesin (SIGLEC1) (NM\_023068) Human Mass Spec Standard

#### Product data:

Product Type:	Mass Spec Standards
Description:	SIGLEC1 MS Standard C13 and N15-labeled recombinant protein (NP_075556)
Species:	Human
Expression Host:	HEK293
Expression cDNA Clone or AA Sequence:	RC224969
Predicted MW:	182.7 kDa



[View online »](#)

**Protein Sequence:** >Peptide sequence encoded by RC224969  
 Blue=ORF Red=Cloning site Green=Tag(s)

MGFLPKLLLLASFFPAGQASWGVSSPQDVQGVKGSCLLIPCIFSFADVEVPDGITAIWYDYDSGQRQV  
 VSHSADPKLVEARFRGRTEFMGNPEHRVCNLLKDLQPEDSGSYNFRFEISEVNRWSDVKGTLVTVTEE  
 PRVPTIASPVELLEGTEVDFNCSTPYVCLQEQRVLRQWQGDPAVSFTFNSQKFEPTGVGHLETLHMAMS  
 WQDHGRILRCQLSMANHRAQSEIHLQVKYAPRGVKILLSPSGRNILPGELVTLTCQVNSSYPVAVSSIKW  
 LKDGVRQLQTKTGVHLHPQAAWSDAGVYTCQAENGVGSLVSPPIISLHIFMAEVQVSPAGPILENQTVTLV  
 CNTPNEAPSDLRYSWYKNHVLLEDAHSHTLRHLATRADTGFYFCEVQNVHGSERSGVPVSVVNHPLPT  
 PVLTAFLAQAGLVGILHCSVSEPLATLVL SHGGHILASTSGSDHSPRFSGTSGPNSLRLEIRDLEE  
 TDSGEYKCSATNSLGNATSTLDFHANAARLLISPAAEVVEGQAVTLSCRSGLSPTPDARFSWYLNALL  
 HEGPGSSLLLPAASSTDAGSYHCRARDGHSASGPSSPAVLTVL YPPRQPTFTTRLDLDAAGAGARRGL  
 LLCRVDSPPARLQLLHKDRVATSLPSGGGCSTCGGCSPRMKVTKAPNLLRVEIHNPLLEEEGLYLCE  
 ASNALGNASTATFNGQATVLA IAPSHTLQEGTEANLTCNVSREAAGSPANFSWRNGVLWAQGPLETEV  
 TLLPVARTDAALYACRILTEAGAQLSTPVLLSVLYPPDRPKLSALLDMGQGHMALFICTVDSRPLALLA  
 LFHGEHLLATSLGPQVPSHGRFQAKAEANSLKLEVRELGLGDSGSYRCEATNVLGSSNTSLFFQVRGAW  
 VQVSPPELQEQAVVLSQVPTGVPEGTSYRWYRDGQPLQESTSATLRFAAITLTQAGAYHCQAQAPG  
 SATTSLAVPISLHVSYAPRHVTLTTLMDTGPGRLLGLLRCRVSDPPAQLRLLHGDRLVASTLQGVGGPE  
 GSSPRLHVAVAPNTLRLEIHGAMLEDEGVYICEASNTLQASASADFDAQAVNVQVWPGATVREGQLVN  
 LTCLVWTTHPAQLTYTWYQDQQRDLDAHSIPLPNVTVRDATSYRCGVGPPGRAPRLSRPITLDVLYAPR  
 NLRLTYLLESHGGQLALVLCVDSRPPAQLALSHAGRLASSTAASVPNTLRLELRGPQRDEGFYSCS  
 ARSPLGQANTSLERLEGVVRVILAPEAAVPEGAPITVTCADPAAHAPTLYTWYHNGRWLQEGPAASLSF  
 LVATRAHAGAYSCQAQDAQGTRSSRPAALQVLYAPQDAVLSVFRDSRARSMAVIQCTVDEPPAELALS  
 HDGKVLATSSGVHSLASGTGHVQVARNALRLQVQDVPAGDDTYVCTAQNLLGSIISTIGRLQVEGARVVA  
 EPGLDVPEGAALNLSCRLLGGPGVGNSTFAFWWDRRLHAEPVPTLAFTHVARAQAGMYHCLAELPTG  
 AAASAPVMLRVL YPPKTPMMVFVEPEGGLRGILD CRVDSEPLASLTLHLGSRLVASSQPQGAPAEPHI  
 HVLASPNALRVDIEALRPSDQGEYICASNVLSASTSTYFGVRLHRLHQFQQLLWVLLVGLLLLLL  
 LGLGACYWRRRRVCKQSMGENSVEMAFQKETTQLIDPDAATCETSTCAPPLG  
 LEQKLISEEDLAANDILDYKDDDDKV

Recombinant protein using RC224969 also available, [TP324969M](#)

**Tag:** C-Myc/DDK

**Purity:** > 80% as determined by SDS-PAGE and Coomassie blue staining

**Concentration:** >0.05 µg/µL as determined by microplate BCA method

**Labeling Method:** Labeled with [U- 13C6, 15N4]-L-Arginine and [U- 13C6, 15N2]-L-Lysine

**Buffer:** 25 mM Tris-HCl, 100 mM glycine, pH 7.3

**Storage:** Store at -80°C. Avoid repeated freeze-thaw cycles.

**Stability:** Stable for 3 months from receipt of products under proper storage and handling conditions.

**RefSeq:** [NP\\_075556](#)

**RefSeq Size:** 5130

**RefSeq ORF:** 5127

**Synonyms:** CD169; SIGLEC-1; SN

**Locus ID:** 6614

UniProt ID: [Q9BZZ2](#)

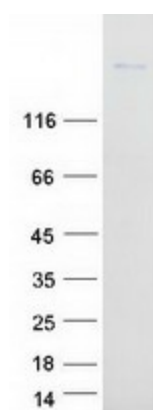
Cytogenetics: 20p13

**Summary:** This gene encodes a member of the immunoglobulin superfamily. The encoded protein is a lectin-like adhesion molecule that binds glycoconjugate ligands on cell surfaces in a sialic acid-dependent manner. It is a type I transmembrane protein expressed only by a subpopulation of macrophages and is involved in mediating cell-cell interactions. Alternative splicing produces a transcript variant encoding an isoform that is soluble rather than membrane-bound; however, the full-length nature of this variant has not been determined. [provided by RefSeq, Jul 2008]

**Protein Families:** Transmembrane

**Protein Pathways:** Cell adhesion molecules (CAMs)

### Product images:



Coomassie blue staining of purified SIGLEC1 protein (Cat# [TP324969]). The protein was produced from HEK293T cells transfected with SIGLEC1 cDNA clone (Cat# [RC224969]) using MegaTran 2.0 (Cat# [TT210002]).