

Product datasheet for PH324966

MARS2 (NM_138395) Human Mass Spec Standard

Product data:

| | |
|---------------------------------------|---|
| Product Type: | Mass Spec Standards |
| Description: | MARS2 MS Standard C13 and N15-labeled recombinant protein (NP_612404) |
| Species: | Human |
| Expression Host: | HEK293 |
| Expression cDNA Clone or AA Sequence: | RC224966 |
| Predicted MW: | 66.6 kDa |
| Protein Sequence: | >RC224966 protein sequence Red=Cloning site Green=Tags(s) |

MLRTSVLRLLGRTGASRLSLEDFGPRYYSSGSL SAGDDACDV RAYFTTPIFYVNAAPHIGHLYSALLAD
ALCRHRRLRGPSTAATRFSTGTDEHGLKIQQAAATAGLAPTELCDRVSEQFQQLFQEQAGISCTDFIRTTE
ARHRVAVQHFVGLKSRGLLYKGVYEGWYCASDECFLPEAKVTQQPGPSGDSFPVSLESGHPVSWTKEEN
YIFRLSQFRKPLQRWLRGNPQAITPEPFHHVVLQWLDEELPDL SVSRRSSHLHWGIPVPGDSDQTIYVWL
DALVNYLTVIGYPNAEFKSWWPATSHIIGKDILKFHAIYWP AFLLGAGMSPPQRICVHSHWTVCGQKMSK
SLGNVDPRTCLNRYTVDGFRYFLLRQGVPNWDCDYDEKVVKLLNSELADALGGLLN RCTAKRINPSET
YPAFCTTCFPSEPLVGPVRAQAEDYALVSAVATLPKQVADHYDNFRIYKALEAVSSCVRQTNGFVQRH
APWKLNWESPVDAPWLGTVLHVALECLRVFGTLLQPVTPLADKLLSRLGVSASERSLGELYFLPRFYGH
PCPFEGRRLLGPETGLLPRLDQSRWLVKAHRT

TRTRPLEQKLI SEEDLAANDILDYKDDDDKV

| | |
|------------------|--|
| Tag: | C-Myc/DDK |
| Purity: | > 80% as determined by SDS-PAGE and Coomassie blue staining |
| Concentration: | >0.05 µg/µL as determined by microplate BCA method |
| Labeling Method: | Labeled with [U- 13C6, 15N4]-L-Arginine and [U- 13C6, 15N2]-L-Lysine |
| Buffer: | 25 mM Tris-HCl, 100 mM glycine, pH 7.3 |
| Storage: | Store at -80°C. Avoid repeated freeze-thaw cycles. |
| Stability: | Stable for 3 months from receipt of products under proper storage and handling conditions. |
| RefSeq: | NP_612404 |
| RefSeq Size: | 3102 |
| RefSeq ORF: | 1779 |



[View online »](#)

Synonyms: COXPD25; MetRS; mtMetRS

Locus ID: 92935

UniProt ID: [Q96GW9](#)

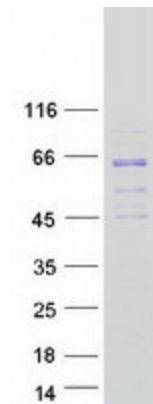
Cytogenetics: 2q33.1

Summary: This gene produces a mitochondrial methionyl-tRNA synthetase protein that is encoded by the nuclear genome and imported to the mitochondrion. This protein likely functions as a monomer and is predicted to localize to the mitochondrial matrix. Mutations in this gene are associated with the autosomal recessive neurodegenerative disease spastic ataxia-3 (SPAX3). [provided by RefSeq, Apr 2014]

Protein Families: Druggable Genome

Protein Pathways: Aminoacyl-tRNA biosynthesis, Selenoamino acid metabolism

Product images:



Coomassie blue staining of purified MARS2 protein (Cat# [TP324966]). The protein was produced from HEK293T cells transfected with MARS2 cDNA clone (Cat# [RC224966]) using MegaTran 2.0 (Cat# [TT210002]).