

Product datasheet for PH324956

Insulin Receptor R (INSRR) (NM_014215) Human Mass Spec Standard

Product data:

Product Type:	Mass Spec Standards
Description:	INSRR MS Standard C13 and N15-labeled recombinant protein (NP_055030)
Species:	Human
Expression Host:	HEK293
Expression cDNA Clone or AA Sequence:	RC224956
Predicted MW:	143.72 kDa
Protein Sequence:	>RC224956 representing NM_014215 Red=Cloning site Green=Tags(s)

MAVPSLWPWGACLPVIFLSLGFGLDTVEVCPSLDIRSEVAELRQLENCVVEGHLQILLMFTATGEDFRG
LSFPRLTQVTDYLLLFVYVYGLSLRDLFPNLAVIRGTRFLGYALVIFEMPHLRDVALPALGAVLRGAVR
VEKNQELCHLSTIDWGLLQPAPGANHIVGNKLGEECADVCPGVLGAAGEPCAKTTFSGHTDYRCWTSSHC
QRVPCPHGMACTARGECCHECLGGCSQPEDPRACVACRHL YFQGAQLWACPPGTYYQYESWRCVTAERC
ASLHSPVGRASTFGIHQGSCLAQCPSGFTRNSSSIFCHKCEGLCPKECKVGTKTIDSIQAAQDLVGCTHV
EGSLILNLRQGYNLEPQLQHSGLVETITGFLKIKHSFALVSLGFFKNLKLIRGDAMVDGNYTLVYLDNQ
NLQQLGSWVAAGLTIPVGKIYFAFNPRCLCEHIYRLEEVTGTRGRQNKAEINPRTNGDRAACQTRTLRFV
SNVTEADRILLRWERYEPEARDLLSFIVYYKESPFQNA TEHVGPDACGTQSWNLLDVELPLSRTQEPGV
TLASLKPWTQYAVFVRAITLTTEEDSPHQGAQSPIVYLRTPAAPTVPQDVI STSNSSHLLVVRWKPPTQ
RNGNLTYLVLWQRLAEDGDL YLNDYCHRGLRLPTSNNDPRFDGEDGDPEAEMESDCCPCQHPGGVLP
PLEAQEASFQKFFENFLHNAITIPISPKVTSINKSPQRDSGRHRAAGPLRLGGNSSDFEIQEDKVPRE
RAVLSGLRHFTEYRIDIHACNHAHTVGC SAATFVFARTMPHREADGIPGKVAWEASSKNSVLLRWLEPP
DPNGLILKYEIKYRRLGEEATVLCVSRLRYAKFGGVHLALLPPGNYSARVRATSLAGNGSWTDSVAFYIL
GPEEEDAGGLHVLLTATPVGLTLLIVLAALGFFYGGKRNRTLYASVNPEYF SASDMYVPDEWEVPREQIS
IIRELGQSF GMVYEG LARGLEAGEESTPVALKTVNELASPRECIEFLKEASVMKAFKCHHVRL LGVVS
QGQPTL VIMELMTRGDLKSHLRSLRPEAENNPGLPQPALGEMIQMAGEIADGMAYLAANKFVHRDLAARN
CMVSQDFTVKIGDFGMTRDVYETDYRKGKGLLPVRWMAPESLKDGIFTT HSDVWSFGVVLWEIVTLAE
QPYQGLSNEQVLKFVMDGGVLEELGCPQLQLQELMSRCWQPNRRLRPSFTHILDSIQEELRPSFRLLSFY
YSPGARGSLPTTDAEPDSSPTPRDCSPQNGGPGH

TRTRPLEQKLI SEEDLAANDILDYKDDDDKV

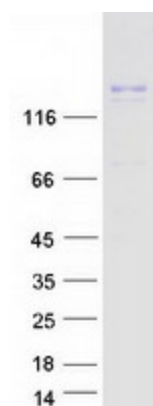
Tag:	C-Myc/DDK
Purity:	> 80% as determined by SDS-PAGE and Coomassie blue staining
Concentration:	>0.05 µg/µL as determined by microplate BCA method



[View online »](#)

Labeling Method:	Labeled with [U- 13C6, 15N4]-L-Arginine and [U- 13C6, 15N2]-L-Lysine
Buffer:	25 mM Tris-HCl, 100 mM glycine, pH 7.3
Storage:	Store at -80°C. Avoid repeated freeze-thaw cycles.
Stability:	Stable for 3 months from receipt of products under proper storage and handling conditions.
RefSeq:	NP_055030
RefSeq Size:	4148
RefSeq ORF:	3891
Synonyms:	IRR
Locus ID:	3645
UniProt ID:	P14616
Cytogenetics:	1q23.1
Summary:	Receptor with tyrosine-protein kinase activity. Functions as a pH sensing receptor which is activated by increased extracellular pH. Activates an intracellular signaling pathway that involves IRS1 and AKT1/PKB.[UniProtKB/Swiss-Prot Function]
Protein Families:	Druggable Genome, Protein Kinase, Transmembrane
Protein Pathways:	Prostate cancer, Regulation of actin cytoskeleton

Product images:



Coomassie blue staining of purified INSRR protein (Cat# [TP324956]). The protein was produced from HEK293T cells transfected with INSRR cDNA clone (Cat# [RC224956]) using MegaTran 2.0 (Cat# [TT210002]).