

## Product datasheet for PH324946

### Keratin 12 (KRT12) (NM\_000223) Human Mass Spec Standard

#### Product data:

Product Type:	Mass Spec Standards
Description:	KRT12 MS Standard C13 and N15-labeled recombinant protein (NP_000214)
Species:	Human
Expression Host:	HEK293
Expression cDNA Clone or AA Sequence:	RC224946
Predicted MW:	53.3 kDa
Protein Sequence:	>RC224946 representing NM_000223 Red=Cloning site Green=Tags(s)

MDLSNNTMSLSVRTPGLSRRLSSQSVIGRPRGMSASSVGSYGGSAFGFGASCGGFSAASMFSSGFG  
GGSGSSMAGGLGAGYGRALGGGSGGGLGMFGGSPGGSLGILSGNDGGLLSGSEKETMQNLNDRLASYL  
DKVRALEEANTELENKIREWYETRGTGTADASQSDYSKYPLIEDLRNKIISASIGNAQLLLQIDNARLA  
AEDFRMKYENELALRQGV EADINGLRRVLDL TL TRTDLEMQIESLNEELAYMKNHEDELQSFVGGPG  
EVSVM DAAPGV DL TRLLNDMRAQYETIAEQNRKDAEAWFIEKSGELRKEISTNTEQLQSSKSEVTDLRR  
AFQNL EIELQSQLAMKKSLEDSLAEAGDYCAQLSQVQQLISNLEAQLLQVRADAERQNVDHQRLLNKVA  
RLELEIET YRRLLDGEAQGDGLEESL FVTDSKSQAQSTDSKDP TKTRIKTVVQEMVNGEVVSSQVQEI  
EELM

TRTRPLEQKLI SEEDLAANDILDYKDDDDKV

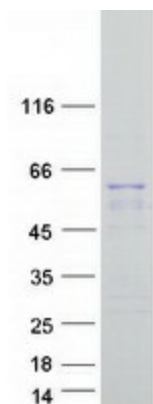
Tag:	C-Myc/DDK
Purity:	> 80% as determined by SDS-PAGE and Coomassie blue staining
Concentration:	>0.05 µg/µL as determined by microplate BCA method
Labeling Method:	Labeled with [U- 13C6, 15N4]-L-Arginine and [U- 13C6, 15N2]-L-Lysine
Buffer:	25 mM Tris-HCl, 100 mM glycine, pH 7.3
Storage:	Store at -80°C. Avoid repeated freeze-thaw cycles.
Stability:	Stable for 3 months from receipt of products under proper storage and handling conditions.
RefSeq:	<u>NP_000214</u>
RefSeq Size:	1867
RefSeq ORF:	1482



[View online »](#)

Synonyms:	K12; MECD1
Locus ID:	3859
UniProt ID:	<a href="#">Q99456</a>
Cytogenetics:	17q21.2
Summary:	KRT12 encodes the type I intermediate filament chain keratin 12, expressed in corneal epithelia. Mutations in this gene lead to Meesmann corneal dystrophy. [provided by RefSeq, Jul 2008]

### Product images:



Coomassie blue staining of purified KRT12 protein (Cat# [TP324946]). The protein was produced from HEK293T cells transfected with KRT12 cDNA clone (Cat# [RC224946]) using MegaTran 2.0 (Cat# [TT210002]).