

## Product datasheet for PH324896

### ICEBERG (CARD18) (NM\_021571) Human Mass Spec Standard

#### Product data:

Product Type:	Mass Spec Standards
Description:	CARD18 MS Standard C13 and N15-labeled recombinant protein (NP_067546)
Species:	Human
Expression Host:	HEK293
Expression cDNA Clone or AA Sequence:	RC224896
Predicted MW:	10 kDa
Protein Sequence:	>RC224896 representing NM_021571 Red=Cloning site Green=Tags(s)  MADQLLRKKRRIFIHSVGAGTINALLDCLLEDEVISQEDMNKVRDENDTVMDKARVLIDLVTGKGPSCC KFIKHLCEEDPQLASKMGLH  TRTRPLEQKLISEEDLAANDILDYKDDDDKV
Tag:	C-Myc/DDK
Purity:	> 80% as determined by SDS-PAGE and Coomassie blue staining
Concentration:	>0.05 µg/µL as determined by microplate BCA method
Labeling Method:	Labeled with [U- 13C6, 15N4]-L-Arginine and [U- 13C6, 15N2]-L-Lysine
Buffer:	25 mM Tris-HCl, 100 mM glycine, pH 7.3
Storage:	Store at -80°C. Avoid repeated freeze-thaw cycles.
Stability:	Stable for 3 months from receipt of products under proper storage and handling conditions.
RefSeq:	<a href="#">NP_067546</a>
RefSeq Size:	431
RefSeq ORF:	270
Synonyms:	ICEBERG; pseudo-ICE; UNQ5804
Locus ID:	59082
UniProt ID:	<a href="#">P57730</a>
Cytogenetics:	11q22.3



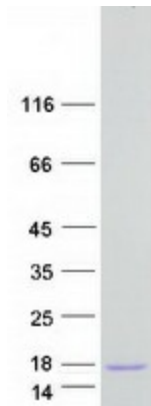
[View online »](#)

**Summary:** Inhibits generation of IL-1-beta by interacting with caspase-1 and preventing its association with RIP2. Down-regulates the release of IL1B.[UniProtKB/Swiss-Prot Function]

**Protein Families:** Druggable Genome

**Protein Pathways:** NOD-like receptor signaling pathway

**Product images:**



Coomassie blue staining of purified CARD18 protein (Cat# [TP324896]). The protein was produced from HEK293T cells transfected with CARD18 cDNA clone (Cat# [RC224896]) using MegaTran 2.0 (Cat# [TT210002]).