

## Product datasheet for PH324895

### MCG10 (PCBP4) (NM\_033010) Human Mass Spec Standard

#### Product data:

Product Type:	Mass Spec Standards
Description:	PCBP4 MS Standard C13 and N15-labeled recombinant protein (NP_127503)
Species:	Human
Expression Host:	HEK293
Expression cDNA Clone or AA Sequence:	RC224895
Predicted MW:	41.5 kDa
Protein Sequence:	>RC224895 protein sequence Red=Cloning site Green=Tags(s)

MSGSDGGLLEEEPELSITLTLRMLMHGKEVGSIIIGKKGETVKRIREQSSARITISEGSPERITITGSTA  
AVFHAVSMIAFKLDEDLCAAPANGGNVSRPPVTLRLVIPASQCGSLIGKAGTKIKEIRETTGAQVQVAGD  
LLPNSTERAVTVSGVPDAIILCVRQICAVILESPKGGATIPYHPSLSLGTVLLSANQGFVSVQGYGAVTP  
AEVTKLQQLSSHAVPFATPSVVPGLDPGTQTSSQEFVLPNDLIGCVIGRQGSKISEIRQMSGAHIKIGNQ  
AEGAGERHVTITGSPVSIALAQYLITACLETAKSTSGGTPSSAPADLPAPFSPPLTALPTAPPGLLGTPY  
AISLSNFIGLKPMFPLALPPASPGPPPGLAAYTAKMAAANGSKKAERQKFSKY

TRTRPLEQKLISEEDLAANDILDYKDDDDKV

Tag:	C-Myc/DDK
Purity:	> 80% as determined by SDS-PAGE and Coomassie blue staining
Concentration:	>0.05 µg/µL as determined by microplate BCA method
Labeling Method:	Labeled with [U- <sup>13</sup> C <sub>6</sub> , <sup>15</sup> N <sub>4</sub> ]-L-Arginine and [U- <sup>13</sup> C <sub>6</sub> , <sup>15</sup> N <sub>2</sub> ]-L-Lysine
Buffer:	25 mM Tris-HCl, 100 mM glycine, pH 7.3
Storage:	Store at -80°C. Avoid repeated freeze-thaw cycles.
Stability:	Stable for 3 months from receipt of products under proper storage and handling conditions.
RefSeq:	<a href="#">NP_127503</a>
RefSeq Size:	1982
RefSeq ORF:	1209
Synonyms:	CBP; LIP4; MCG10
Locus ID:	57060



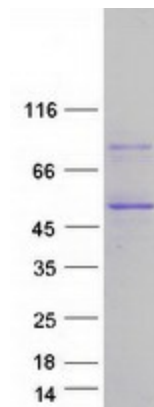
[View online »](#)

UniProt ID: [P57723](#), [A0A024R2Y0](#)

Cytogenetics: 3p21.2

**Summary:** This gene encodes a member of the KH-domain protein subfamily. Proteins of this subfamily, also referred to as alpha-CPs, bind to RNA with a specificity for C-rich pyrimidine regions. Alpha-CPs play important roles in post-transcriptional activities and have different cellular distributions. This gene is induced by the p53 tumor suppressor, and the encoded protein can suppress cell proliferation by inducing apoptosis and cell cycle arrest in G(2)-M. This gene's protein is found in the cytoplasm, yet it lacks the nuclear localization signals found in other subfamily members. Multiple alternatively spliced transcript variants have been described, but the full-length nature for only some has been determined. [provided by RefSeq, Jul 2008]

### Product images:



Coomassie blue staining of purified PCBP4 protein (Cat# [TP324895]). The protein was produced from HEK293T cells transfected with PCBP4 cDNA clone (Cat# [RC224895]) using MegaTran 2.0 (Cat# [TT210002]).