

Product datasheet for PH324885

OSTF1 (NM_012383) Human Mass Spec Standard

Product data:

Product Type:	Mass Spec Standards
Description:	OSTF1 MS Standard C13 and N15-labeled recombinant protein (NP_036515)
Species:	Human
Expression Host:	HEK293
Expression cDNA Clone or AA Sequence:	RC224885
Predicted MW:	23.6 kDa
Protein Sequence:	>RC224885 representing NM_012383 Red=Cloning site Green=Tags(s) MSKPPPKPVKPGQVKVFRALYTFEPRTPDELYFEEGDIIYITDMSDTNWWKGTSGKRTGLIPSNYVAEQA ESIDNPLHEAAKRGNLSWLRECLDNRVGVNGLDKAGSTALYWACHGGHKDIVEMLFTQPNIELNQNKLG DTALHAAAWKGYADIVQLLLAKGARTDLRNIKKLAFDMATNAACASLLKKKQGTDAVRTLSNAEDYLDD EDSD TRTRPLEQKLI SEEDLAANDILDYKDDDDKV
Tag:	C-Myc/DDK
Purity:	> 80% as determined by SDS-PAGE and Coomassie blue staining
Concentration:	>0.05 µg/µL as determined by microplate BCA method
Labeling Method:	Labeled with [U- ¹³ C ₆ , ¹⁵ N ₄]-L-Arginine and [U- ¹³ C ₆ , ¹⁵ N ₂]-L-Lysine
Buffer:	25 mM Tris-HCl, 100 mM glycine, pH 7.3
Storage:	Store at -80°C. Avoid repeated freeze-thaw cycles.
Stability:	Stable for 3 months from receipt of products under proper storage and handling conditions.
RefSeq:	NP_036515
RefSeq Size:	901
RefSeq ORF:	642
Synonyms:	bA235O14.1; OSF; SH3P2
Locus ID:	26578
UniProt ID:	Q92882

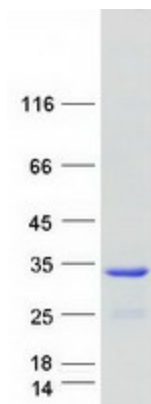


[View online »](#)

Cytogenetics: 9q21.13

Summary: Osteoclast-stimulating factor-1 is an intracellular protein produced by osteoclasts that indirectly induces osteoclast formation and bone resorption (Reddy et al., 1998 [PubMed 10092216]).[supplied by OMIM, Mar 2008]

Product images:



Coomassie blue staining of purified OSTF1 protein (Cat# [TP324885]). The protein was produced from HEK293T cells transfected with OSTF1 cDNA clone (Cat# [RC224885]) using MegaTran 2.0 (Cat# [TT210002]).