

## Product datasheet for PH324851

### UBE2S (NM\_014501) Human Mass Spec Standard

#### Product data:

Product Type:	Mass Spec Standards
Description:	UBE2S MS Standard C13 and N15-labeled recombinant protein (NP_055316)
Species:	Human
Expression Host:	HEK293
Expression cDNA Clone or AA Sequence:	RC224851
Predicted MW:	23.7 kDa
Protein Sequence:	>RC224851 representing NM_014501 Red=Cloning site Green=Tags(s)  MNSNVENLPPHIIRLVYKEVTTLTADPPDGIKVFPNEEDLTDLQVTIEGPEGTPYAGGLFRMKLLLGKDF PASPPKGYFLTKIFHPNVGANGEICVNVLKRWDTAELGIRHVLLTIKCLLIHPNPESALNEEAGRLLLEN YEEYAARARLLTEIHGGAGGPGSRAEAGRALASGTEASSTDPGAPGGPGGAEGPMAKKHAGERDKKLA AKKTKDKRALRRL  TRTRPLEQKLI SEEDLAANDILDYKDDDDKV
Tag:	C-Myc/DDK
Purity:	> 80% as determined by SDS-PAGE and Coomassie blue staining
Concentration:	>0.05 µg/µL as determined by microplate BCA method
Labeling Method:	Labeled with [U- 13C6, 15N4]-L-Arginine and [U- 13C6, 15N2]-L-Lysine
Buffer:	25 mM Tris-HCl, 100 mM glycine, pH 7.3
Storage:	Store at -80°C. Avoid repeated freeze-thaw cycles.
Stability:	Stable for 3 months from receipt of products under proper storage and handling conditions.
RefSeq:	<a href="#">NP_055316</a>
RefSeq Size:	890
RefSeq ORF:	666
Synonyms:	E2-EPF; E2EPF; EPF5
Locus ID:	27338
UniProt ID:	<a href="#">Q16763</a>



[View online »](#)

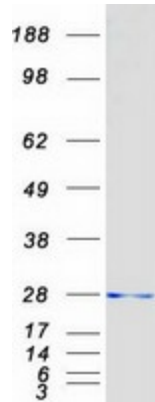
Cytogenetics: 19q13.42

**Summary:** This gene encodes a member of the ubiquitin-conjugating enzyme family. The encoded protein is able to form a thiol ester linkage with ubiquitin in a ubiquitin activating enzyme-dependent manner, a characteristic property of ubiquitin carrier proteins. [provided by RefSeq, Jul 2008]

**Protein Families:** Druggable Genome

**Protein Pathways:** Ubiquitin mediated proteolysis

### Product images:



Coomassie blue staining of purified UBE2S protein (Cat# [TP324851]). The protein was produced from HEK293T cells transfected with UBE2S cDNA clone (Cat# [RC224851]) using MegaTran 2.0 (Cat# [TT210002]).