

Product datasheet for PH324843

NAA60 (NM_001083600) Human Mass Spec Standard

Product data:

Product Type:	Mass Spec Standards
Description:	NAT15 MS Standard C13 and N15-labeled recombinant protein (NP_001077069)
Species:	Human
Expression Host:	HEK293
Expression cDNA Clone or AA Sequence:	RC224843
Predicted MW:	27.3 kDa
Protein Sequence:	>RC224843 representing NM_001083600 Red=Cloning site Green=Tags(s) MTEVVPSSALSEVSLRLLCHDDIDTVKHLCDWFPIEYPDSWYRDITSNKKFFSLAATYRGAIVGMIVAE IKNRTKIHKEDGDILASNFSVDTQVAYILSLGVVKEFRKHGIGSLLLESLKDHI STTAQDHCKAIYLVHL TTNNTAIFYENRDFKQHHYLPYYYSIRGVLKDGFTYVLYINGGHPWTILDYIQHLGSALASLSPCSIP HRVYRQAHSLLCSFLPWSGISSKSGIEYSRTM TRTRPLEQKLI SEEDLAANDILDYKDDDDKV
Tag:	C-Myc/DDK
Purity:	> 80% as determined by SDS-PAGE and Coomassie blue staining
Concentration:	>0.05 µg/µL as determined by microplate BCA method
Labeling Method:	Labeled with [U- ¹³ C ₆ , ¹⁵ N ₄]-L-Arginine and [U- ¹³ C ₆ , ¹⁵ N ₂]-L-Lysine
Buffer:	25 mM Tris-HCl, 100 mM glycine, pH 7.3
Storage:	Store at -80°C. Avoid repeated freeze-thaw cycles.
Stability:	Stable for 3 months from receipt of products under proper storage and handling conditions.
RefSeq:	NP_001077069
RefSeq Size:	2642
RefSeq ORF:	726
Synonyms:	HAT4; hNaa60; NAT15; NatF
Locus ID:	79903
UniProt ID:	Q9H7X0 , A0A384NYU5

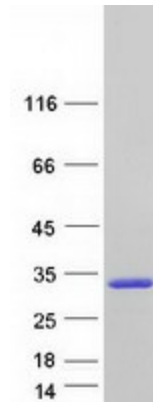


[View online »](#)

Cytogenetics: 16p13.3

Summary: This gene encodes an enzyme that localizes to the Golgi apparatus, where it transfers an acetyl group to the N-terminus of free proteins. This enzyme acts on histones, and its activity is important for chromatin assembly and chromosome integrity. Alternative splicing and the use of alternative promoters results in multiple transcript variants. The upstream promoter is located in a differentially methylated region (DMR) and undergoes imprinting; transcript variants originating from this position are expressed from the maternal allele. [provided by RefSeq, Nov 2015]

Product images:



Coomassie blue staining of purified NAA60 protein (Cat# [TP324843]). The protein was produced from HEK293T cells transfected with NAA60 cDNA clone (Cat# [RC224843]) using MegaTran 2.0 (Cat# [TT210002]).