

## Product datasheet for PH324816

### WNT8A (NM\_058244) Human Mass Spec Standard

#### Product data:

Product Type:	Mass Spec Standards
Description:	WNT8A MS Standard C13 and N15-labeled recombinant protein (NP_490645)
Species:	Human
Expression Host:	HEK293
Expression cDNA Clone or AA Sequence:	RC224816
Predicted MW:	38.7 kDa
Protein Sequence:	>RC224816 representing NM_058244 Red=Cloning site Green=Tags(s)  MGNLFMLWAALGICCAAFSASAWSVNNFLITGPKAYLTYTTSVALGAQSGIEECKFQFAWERWNCPENAL QLSTHNRLRSATRETSFIHAISSAGVMYIITKNCMSMGDFENCGCDGSNNGKTGGHGWIWGGCSDNVEFGE RISKLFVDSLEKGDARALMNLHNNRAGRLAVRATMKRTCKCHGISGSCSIQTCWLQLAEFREMGDYLKA KYDQALKIEMDKRQLRAGNSAEGHWVPAEAFPSAEAEELIFLEESPDYCTCNSSLGIYGTGRECLQNSH NTSRWERRSCGRLCTEGLQVEERKTEVISSCNCKFQWCCTVKCDQCRHVVSKEYCARSPGSAQSLGKGS A  TRTRPLEQKLISEEDLAANDILDYKDDDDKV
Tag:	C-Myc/DDK
Purity:	> 80% as determined by SDS-PAGE and Coomassie blue staining
Concentration:	>0.05 µg/µL as determined by microplate BCA method
Labeling Method:	Labeled with [U- <sup>13</sup> C <sub>6</sub> , <sup>15</sup> N <sub>4</sub> ]-L-Arginine and [U- <sup>13</sup> C <sub>6</sub> , <sup>15</sup> N <sub>2</sub> ]-L-Lysine
Buffer:	25 mM Tris-HCl, 100 mM glycine, pH 7.3
Storage:	Store at -80°C. Avoid repeated freeze-thaw cycles.
Stability:	Stable for 3 months from receipt of products under proper storage and handling conditions.
RefSeq:	<a href="#">NP_490645</a>
RefSeq Size:	1899
RefSeq ORF:	1053
Synonyms:	WNT8D
Locus ID:	7478



[View online »](#)

UniProt ID: [Q9H1J5](#)

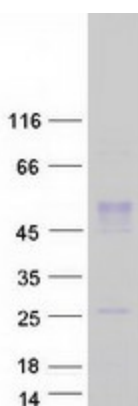
Cytogenetics: 5q31.2

**Summary:** The WNT gene family consists of structurally related genes which encode secreted signaling proteins. These proteins have been implicated in oncogenesis and in several developmental processes, including regulation of cell fate and patterning during embryogenesis. This gene is a member of the WNT gene family, and may be implicated in development of early embryos as well as germ cell tumors. Multiple alternatively spliced transcript variants have been found for this gene. [provided by RefSeq, Jul 2014]

**Protein Families:** Cancer stem cells, ES Cell Differentiation/IPS, Induced pluripotent stem cells, Secreted Protein, Stem cell relevant signaling - Wnt Signaling pathway

**Protein Pathways:** Basal cell carcinoma, Hedgehog signaling pathway, Melanogenesis, Pathways in cancer, Wnt signaling pathway

### Product images:



Coomassie blue staining of purified WNT8A protein (Cat# [TP324816]). The protein was produced from HEK293T cells transfected with WNT8A cDNA clone (Cat# [RC224816]) using MegaTran 2.0 (Cat# [TT210002]).