

Product datasheet for PH324808

SCP1 (SYCP1) (NM_003176) Human Mass Spec Standard

Product data:

Product Type:	Mass Spec Standards
Description:	SYCP1 MS Standard C13 and N15-labeled recombinant protein (NP_003167)
Species:	Human
Expression Host:	HEK293
Expression cDNA Clone or AA Sequence:	RC224808
Predicted MW:	114.2 kDa
Protein Sequence:	>RC224808 protein sequence Red=Cloning site Green=Tags(s)

MEKQKPFALFVPPRSSSSQVSAVKPQTLGGDSTFFKSFNKCTEDDFEFPFAKTNLSKNGENIDSDPALQK
VNFLPVLEQVGNSDCHYQEGDKDSDLENSEGLSRVYSKLYKEAEKIKKWKVSTAEALRQKESKLQENRKI
IEAQRKAIQELQFGNEKVSLKLEEGIQENKDLIKENNATRHLNLLKETCARSAEKTKKYEYEREETRQV
YMDLNNNIEKMITAFEELRVQAENSRLMFMFKLKEYEKIQHLEQEQYKKEINDKEKQVSLLLIQITEKEN
KMKDLTFLLLEESRDKNVQLEEKTKLQSENKQSIKQHHLTKELEDIKVSLQRSVSTQKALEEDLQIATK
TICQLTEEKETQMEESENKARAAHSFVVTEFETTVCSELELLRTEQQRLEKNEDQLKILTMELQKKSSELE
EMTKLTNNKEVELEELKKVLGEKETLLYENKQFEKIAEELKGTEQELIGLLQAREKEVHDLEIQLTAITT
SEQYYSKEVKDLKTELENEKLNTEL TSHCNKLSLENKELTQETSMDTLELNQEQEDINNKKQEERMLK
QIENLQETETQLRNELEYVREELKQQRDEVCKLKDSEENCNLRKQVENKNKYIEELQQENKALKKKGT
AESKQLNVYEIKVKNLELELESKQKFGIETDTYQKEIEDKKISEENLLEEVEKAKVIADAVKQKEID
KRCQHKIAEMVALMEKHKHQYDKIIIEERDSELGLYKSKEQEQSSLRASLEIELSNLKAELLSVKQLEIE
REEKEKLRKREAKENTATLKEKDKKTQTFLEETPEIYWKLDKAVPSQTVSRNFTSVDHGISKDKRDYLV
TSKNTLSTPLPKAYTVKTPKPKLQRENLNIPIEESKKKRKMFAFEFDINSDSSETDILLSMVSEETL
KTLYRNNPPASHLCVKTPKKAPSSLTPGSTLKFGAIRKMRDRWAVIAKMDRKKKLKEAEKLFV

TRTRPLEQKLI SEEDLAANDILDYKDDDDKV

Tag:	C-Myc/DDK
Purity:	> 80% as determined by SDS-PAGE and Coomassie blue staining
Concentration:	>0.05 µg/µL as determined by microplate BCA method
Labeling Method:	Labeled with [U- ¹³ C ₆ , ¹⁵ N ₄]-L-Arginine and [U- ¹³ C ₆ , ¹⁵ N ₂]-L-Lysine
Buffer:	25 mM Tris-HCl, 100 mM glycine, pH 7.3
Storage:	Store at -80°C. Avoid repeated freeze-thaw cycles.
Stability:	Stable for 3 months from receipt of products under proper storage and handling conditions.

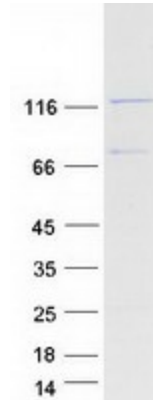


[View online »](#)

RefSeq: [NP_003167](#)
RefSeq Size: 3529
RefSeq ORF: 2928
Synonyms: CT8; HOM-TES-14; SCP-1; SCP1
Locus ID: 6847
UniProt ID: [Q15431](#), [A0A024R0I2](#)
Cytogenetics: 1p13.2

Summary: Major component of the transverse filaments of synaptonemal complexes, formed between homologous chromosomes during meiotic prophase. Required for normal assembly of the central element of the synaptonemal complexes. Required for normal centromere pairing during meiosis. Required for normal meiotic chromosome synapsis during oocyte and spermatocyte development and for normal male and female fertility.[UniProtKB/Swiss-Prot Function]

Product images:



Coomassie blue staining of purified SYCP1 protein (Cat# [TP324808]). The protein was produced from HEK293T cells transfected with SYCP1 cDNA clone (Cat# [RC224808]) using MegaTran 2.0 (Cat# [TT210002]).